



Exotic Invasive Starry stonewort: Biology, Preferred Habitat, Distribution, and Impacts on Inland Lake Ecosystems

Presentation and Photos
by

Scott Brown
Michigan Waterfront Alliance



Introduction

The most successful bio-invasions are likely to occur as a result of a close match between an invader's unique physiological requirements, and the characteristics of the ecosystems being invaded.

- Francesca Gherardi, 2007



Introduction

Molnar *et al.* (2008) suggests that the exotic aquatic invasive species with the greatest potential to render harmful ecological influences are:

- capable of altering community structure and food webs
- displacing native species
- modifying fundamental ecological processes

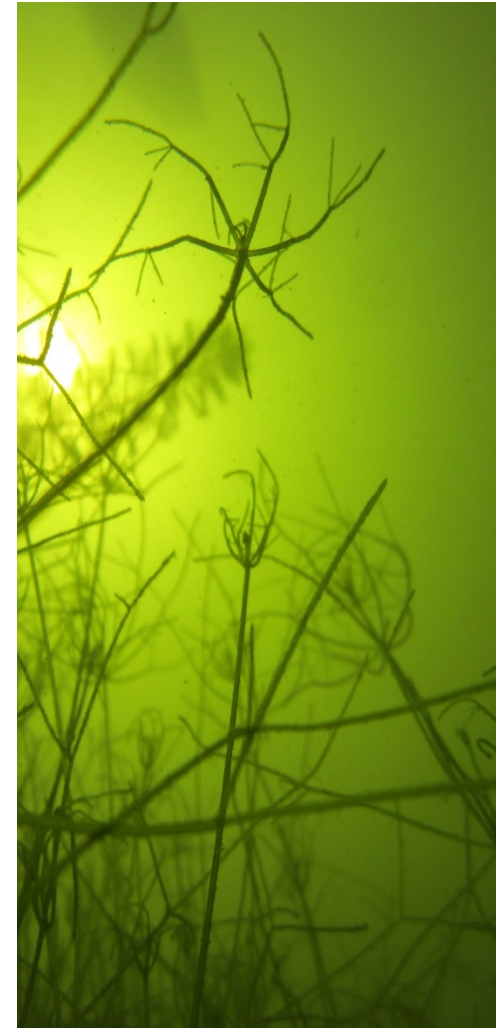
Dreissena polymorpha (zebra mussels), for example, a filter-feeding mollusk that is native to the Ponto-Caspian region of Europe, has driven profound changes to Great Lakes region sport fisheries due to the ability to drastically alter complex food webs, and trophic state conditions (Mills *et al.*, 1993).



Introduction

Starry stonewort

- scientific name: *Nitellopsis obtusa*
- common name: starry stonewort
- submerged aquatic macrophyte (Characeae)
- macroscopic primarily fresh water green algae
- native to northern latitudes extending from the west coast of Europe to Japan (Soulie-Marsche *et al.*, 2002)
- A highly beneficial promoter of clean waters and increasingly rare “sentinel” species where perennial growth in its native range is recognized as a reliable bio-indicator of stable moderately productive aquatic ecosystems (Stewart, 1996)
- European Water Framework Directive has awarded special conservation status to inland lakes that have sustained their ability to support indigenous *N. obtusa* (Melzer, 1999)





Taxonomy

Empire: Eukaryota

Kingdom: Plantae

Phylum: Charophyta

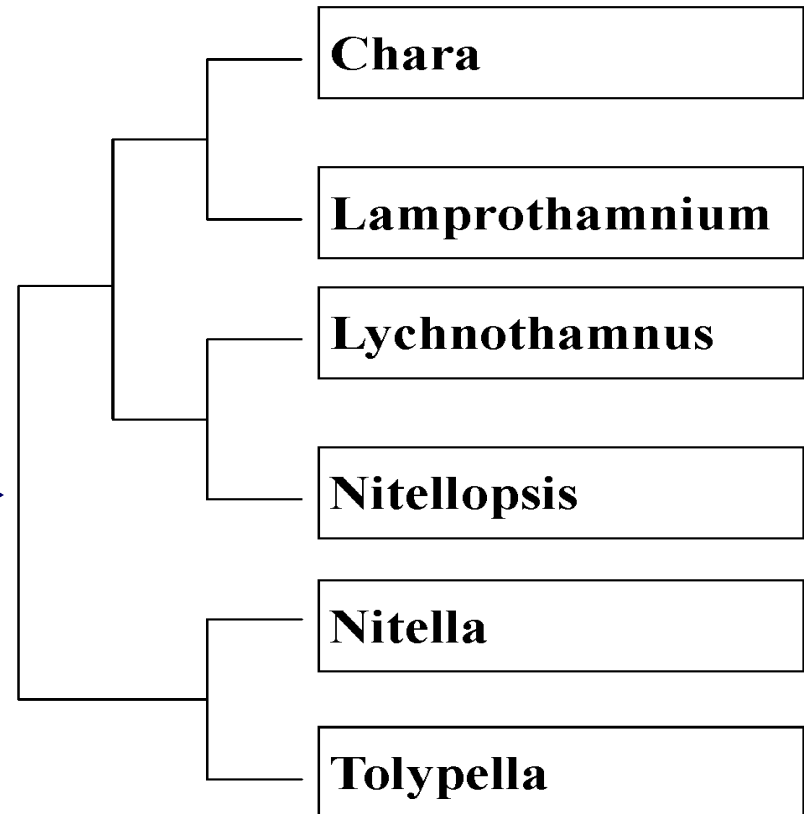
Class: Charophyceae

Order: Charales

Family: Characeae →

Genus: Nitellopsis

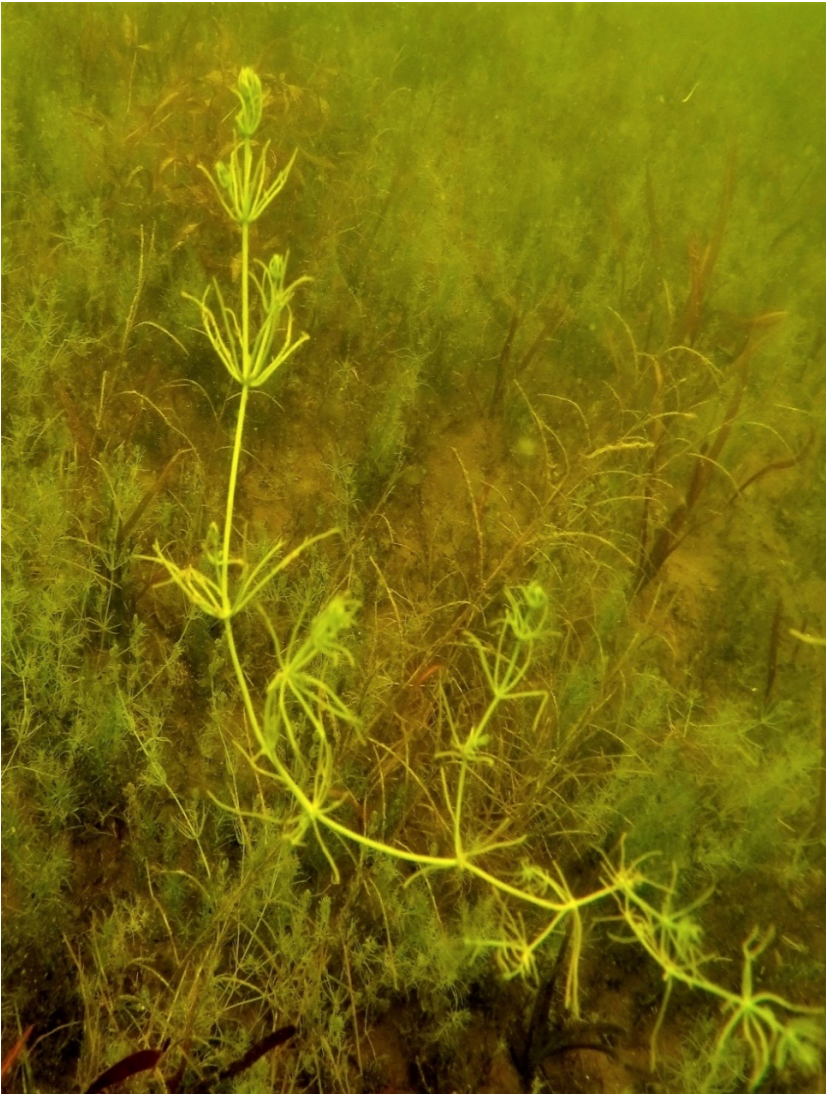
Species: Nitellopsis obtusa



Reference: Lewis and McCourt (2004)

Graphic: Lewis and McCourt (2004)

Members of the Family Characeae Frequently Occurring in Michigan Waters



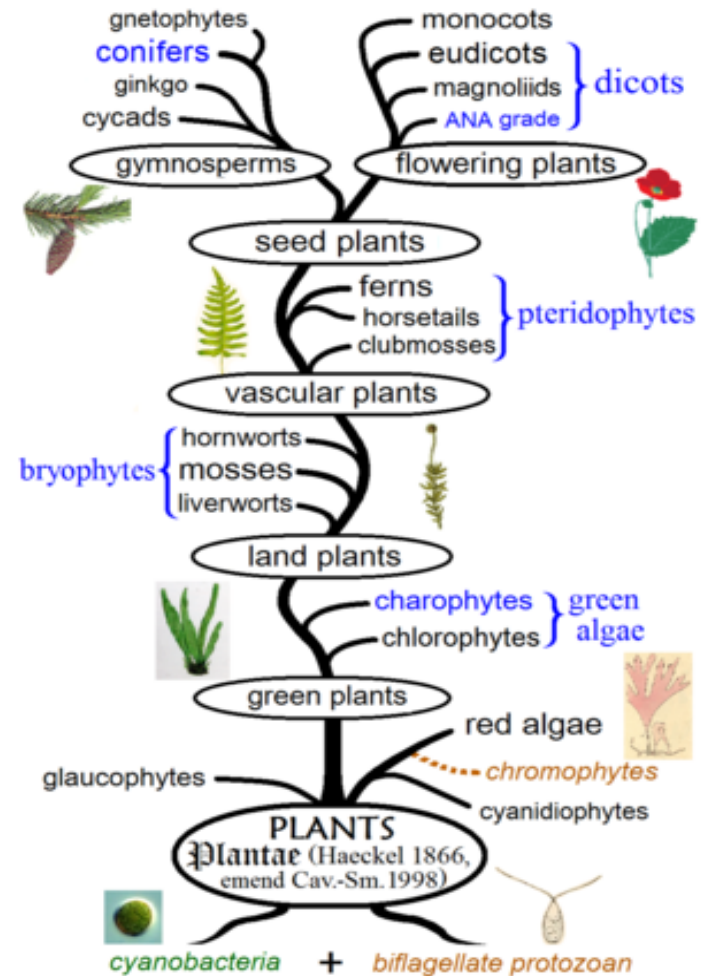
Chara vulgaris



Chara braunii

Relationship to the Evolution of Land Plants

Nitellopsis obtusa belongs to a diverse group of over 300 ancient submerged macroscopic green algae species that are known to be closely related to all land plants.





Basic Morphology and Identification of Starry stonewort

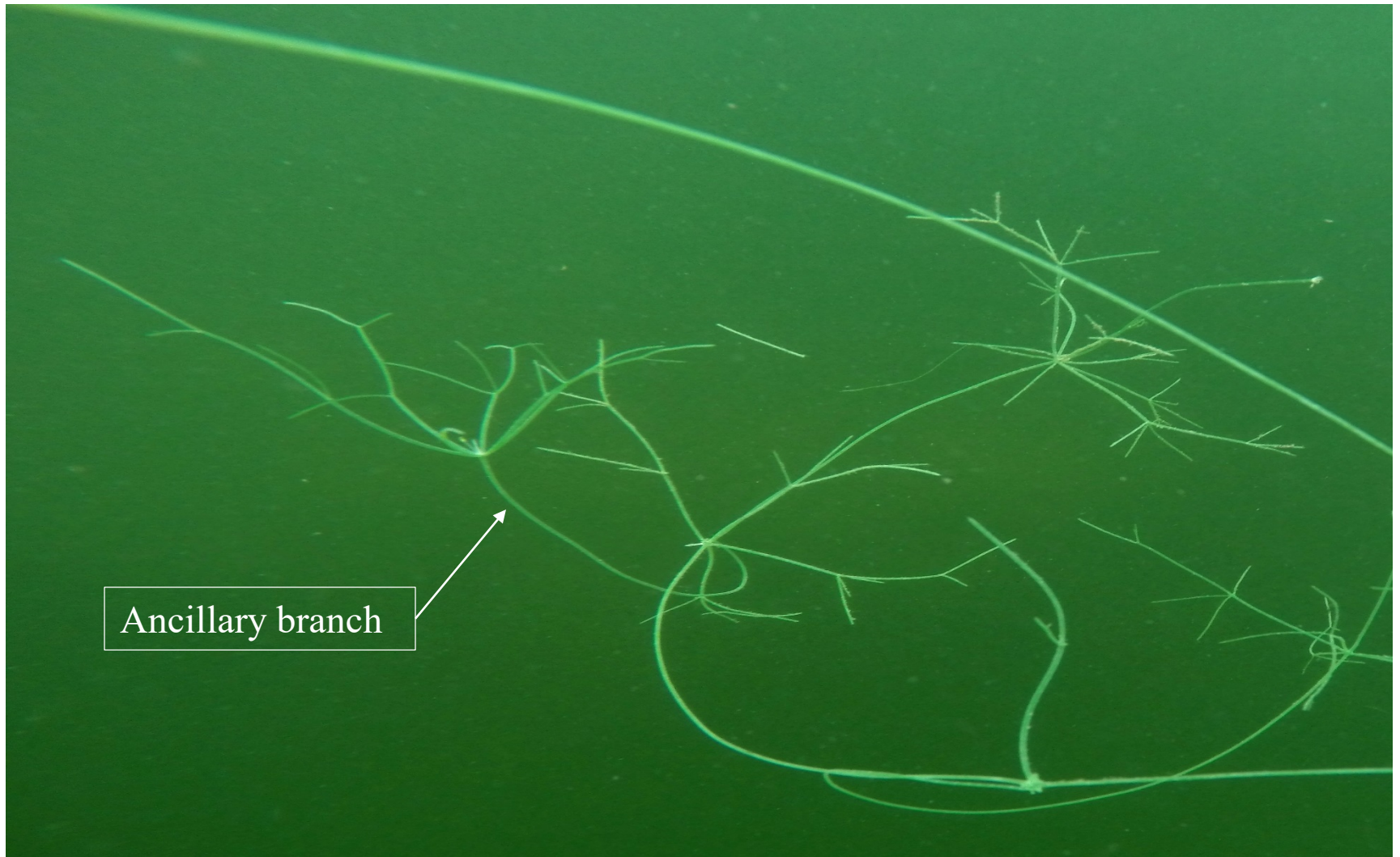
- highly evolved multi-cellular organism
- small apex coronula
- two to seven nodes and internodes in series
- nodes each host a whorl comprised of **five** to **seven** thin upwardly radiating branchlets hosting bract cells on mature plants
- upper most nodes are also often characterized by an ancillary branch that is capable of hosting two to three internode/node sequences and reaching one meter in length
- overall length ranges from 24 cm - 2.0 meters
- anchored to fine organic particulate substrate by extraordinarily delicate translucent rhizoids

Reference: Bharathan, 1983

Starry stonewort

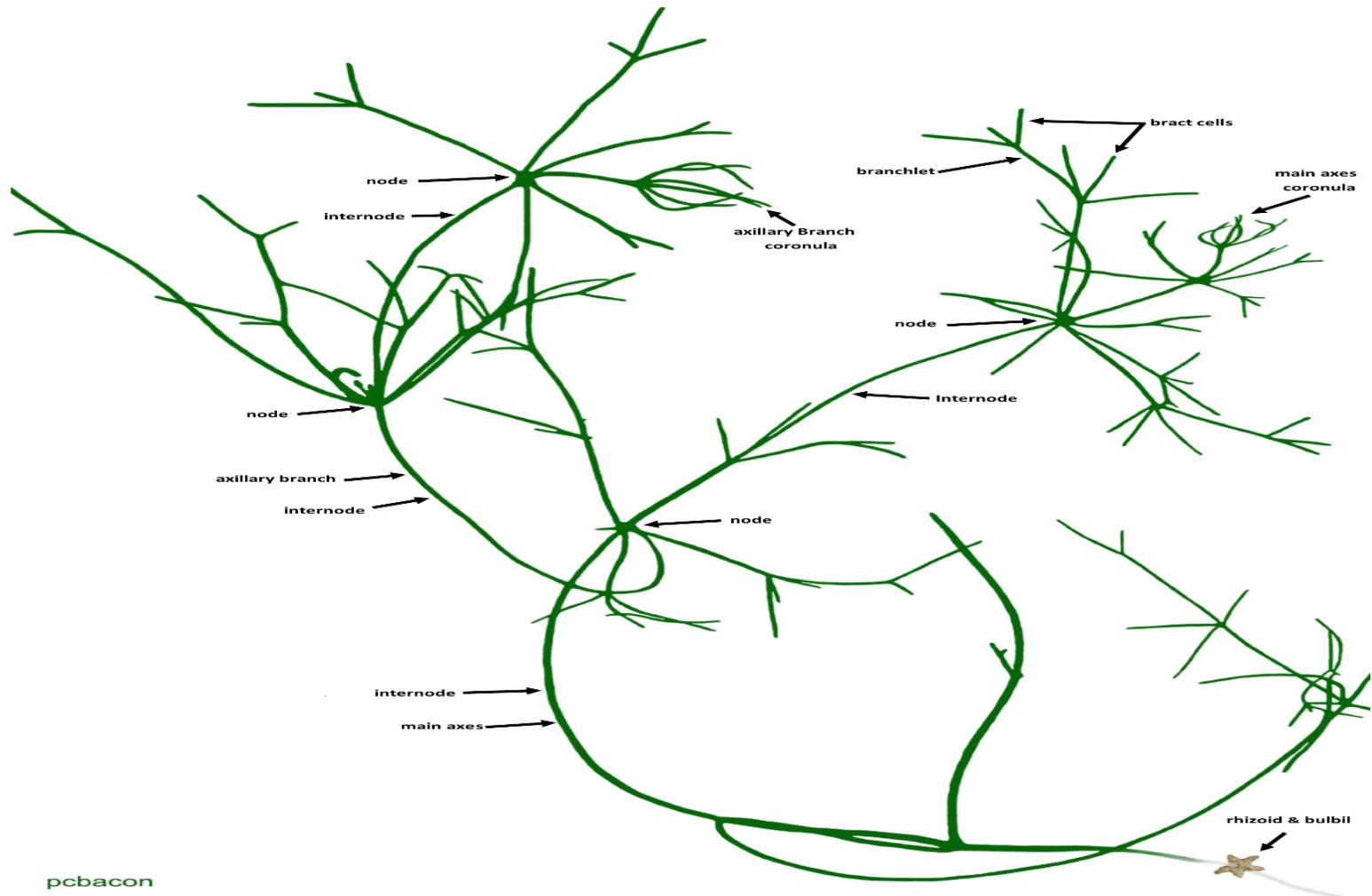


Basic Morphology and Identification of Starry stonewort



Ancillary branch

Basic Morphology and Identification of Starry stonewort



Basic Morphology and Identification of Starry stonewort

The lengthy internode cells and the node whorls often inter-twine, leading to confusion in properly identifying *N. obtusa* based on the number of upwardly radiating node whorl branchlets. The node whorls of *N. obtusa* are, **without exception**, comprised of **five to seven (5 – 7)** upwardly radiating branchlets that often host bract cells.

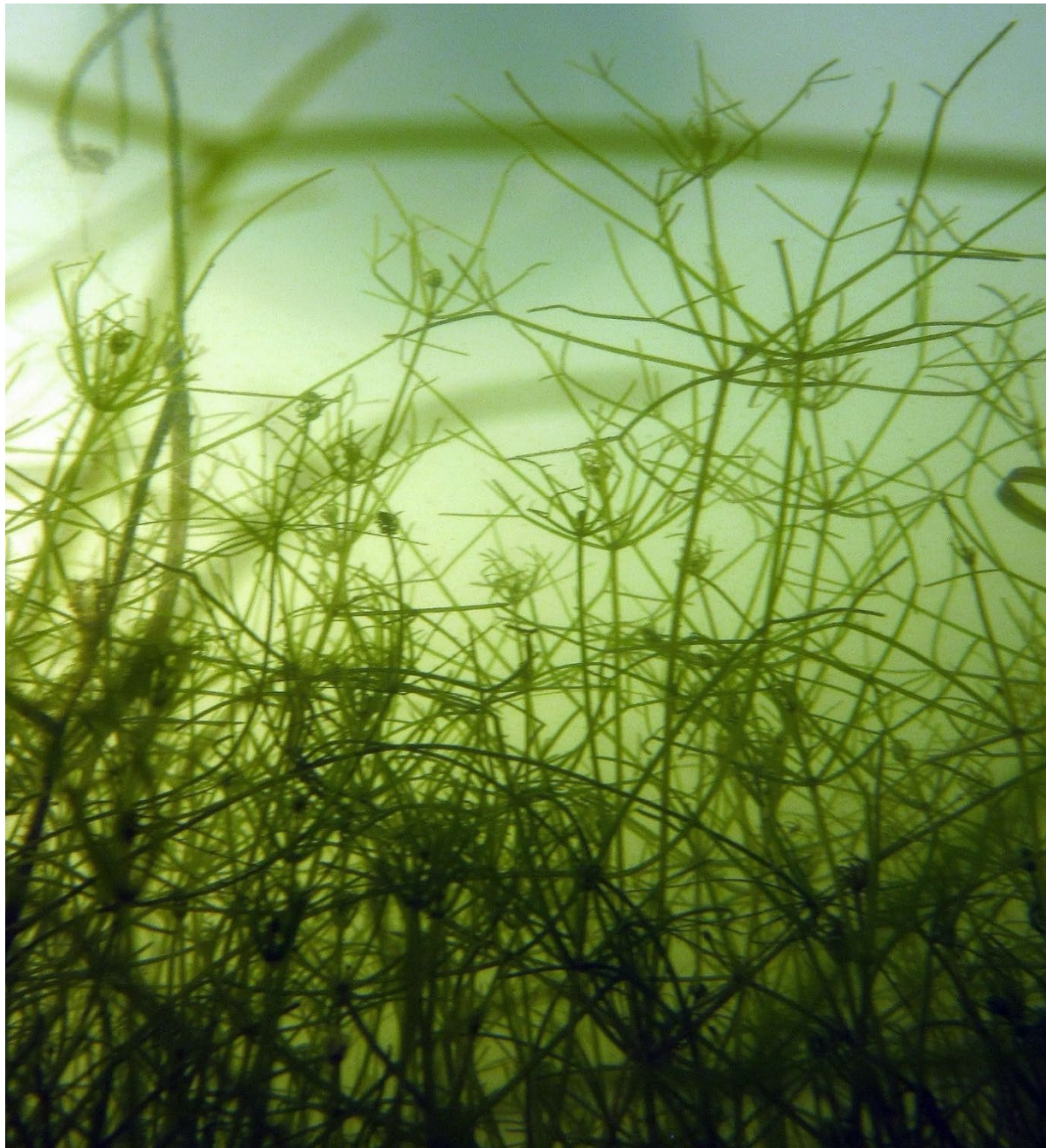


Basic Morphology and Identification of Starry stonewort



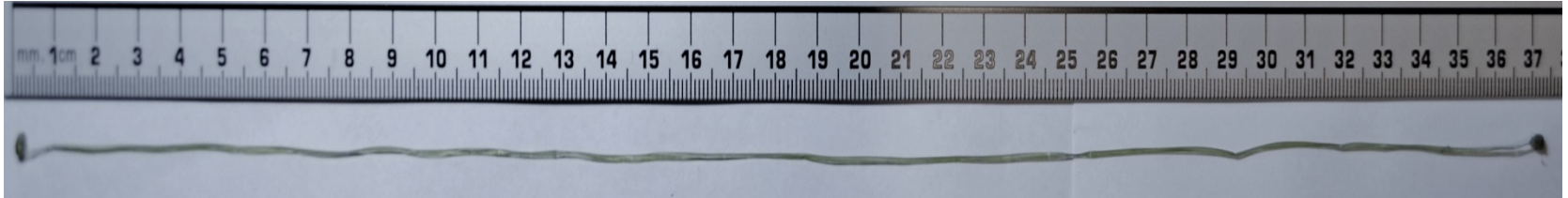
Basic Morphology and Identification of Starry stonewort





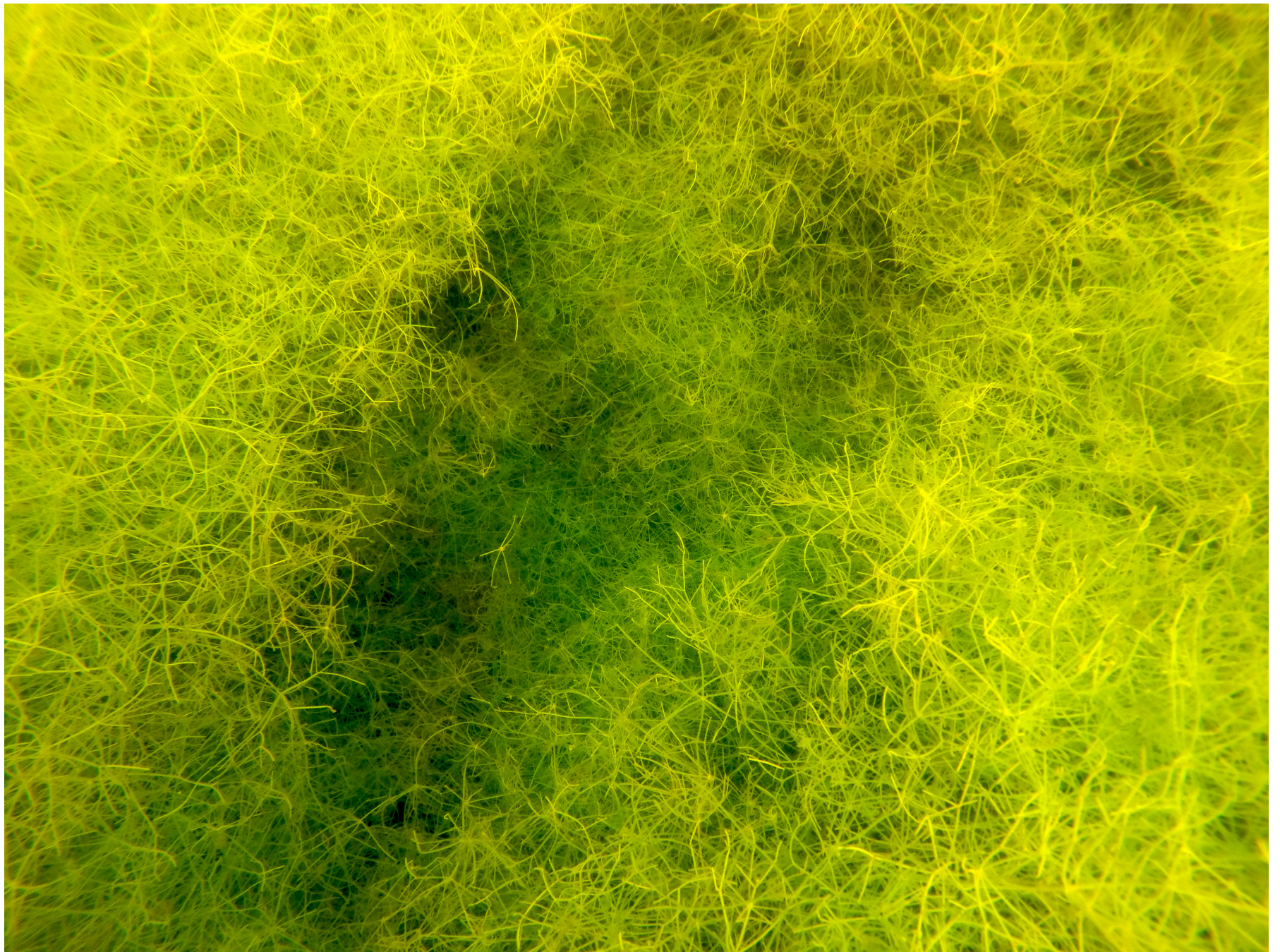
1.7 m
or
5.6 ft

Starry Stonewort: The Subject of Numerous Cytological Studies



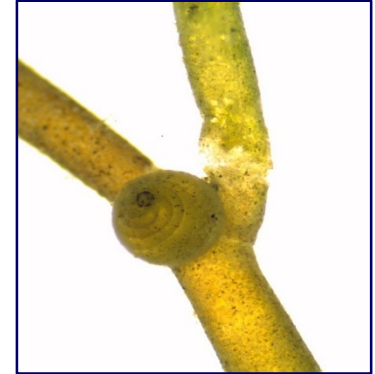
- inter-node cells 0.4 to 2 mm in diameter and up to 40 cm in length
- large thallus of *N. obtusa* comprised of up to seven internode cells
- one of the largest discrete cells known to modern biology
- ideal in size for manipulation and observation
- considered to be discrete living organisms
- perpetuates cytoplasmic streaming following separation from thallus

Reference: Johnson *et al.*, 2002



Sexual Reproductive Capabilities of Starry Stonewort

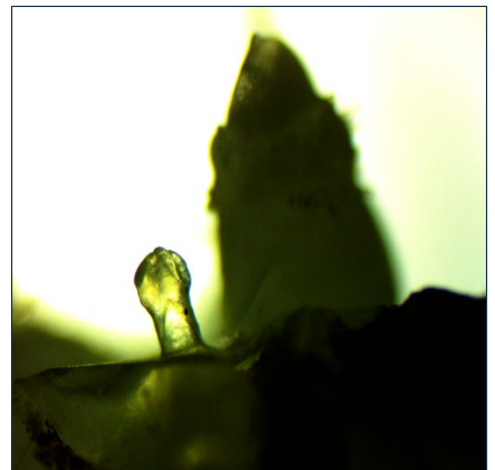
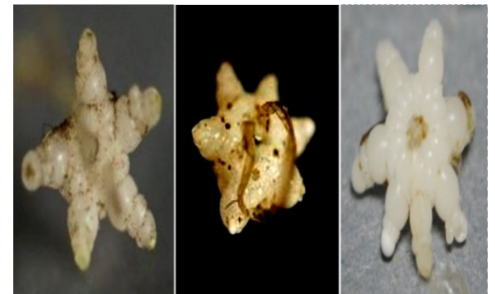
- capable of sexual and asexual reproduction, and through fragmentation
- starry stonewort is dioecious – female plants and male plants
- sexual reproduction occurs through production and fertilization of oospores
- sexual reproductive processes of *N. obtusa* are oogamous in nature, a system in which the egg is large and non-motile, while the asymmetrical sperm that are produced within the threadlike cells of the antheridium (McCourt *et al.*, 2004)
- male antheridium of *Nitellopsis obtusa* are spherical, and usually reddish-brown in color (Bharathan, 1983)
- gyrogonites are capable of surviving in sediments for decades (Soulie-Marsche, 2008)





Asexual Reproductive Capabilities of Starry Stonewort

- North American colonies thus far consists of all male plants (thallus)
- asexual reproduction occurs primarily by prolific production of vegetative bulbils
- bulbils are formed on the translucent rhizoids
- “many new” juvenile plants are formed and are announced by the presence of translucent protonema-like growths that arise from the upper surfaces of the mature bulbil (Bharathan, 1987)
- range in diameter from one to ten millimeters (van den Berg, 1999)
- bulbils provide an effective means of overwinter storage of biotic energy reserves and nutrients (Sculthorpe, 1967)



Asexual Reproductive Capabilities of Starry Stonewort

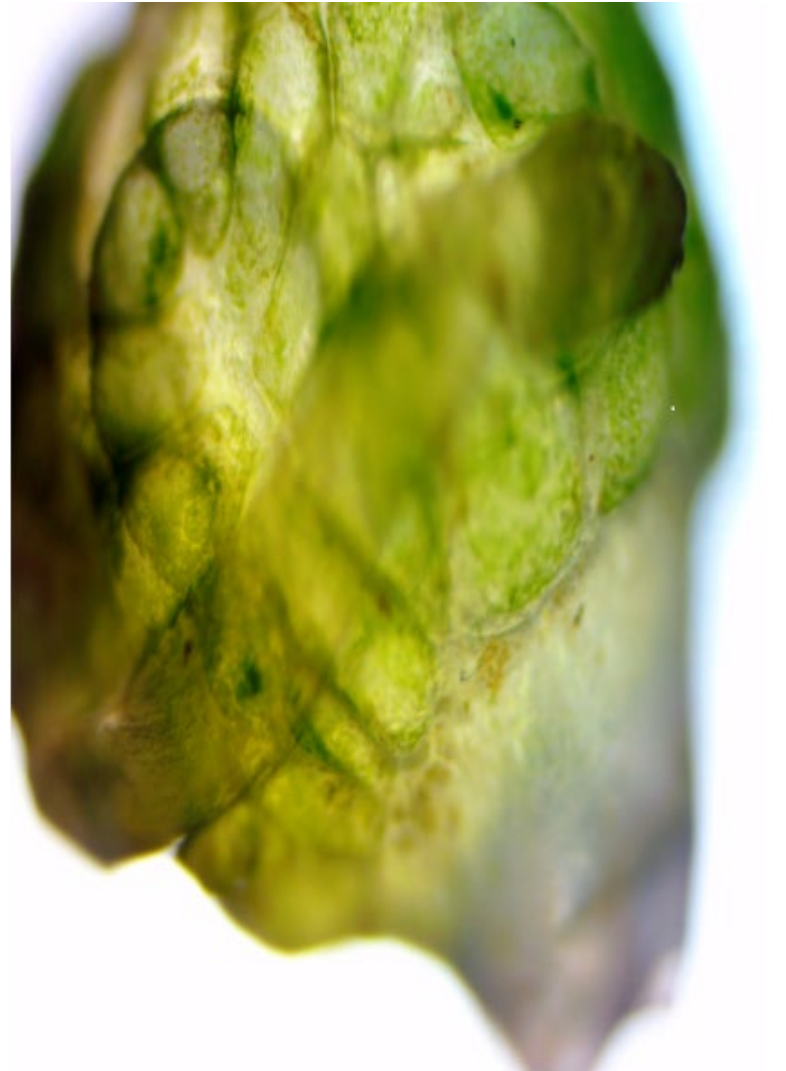
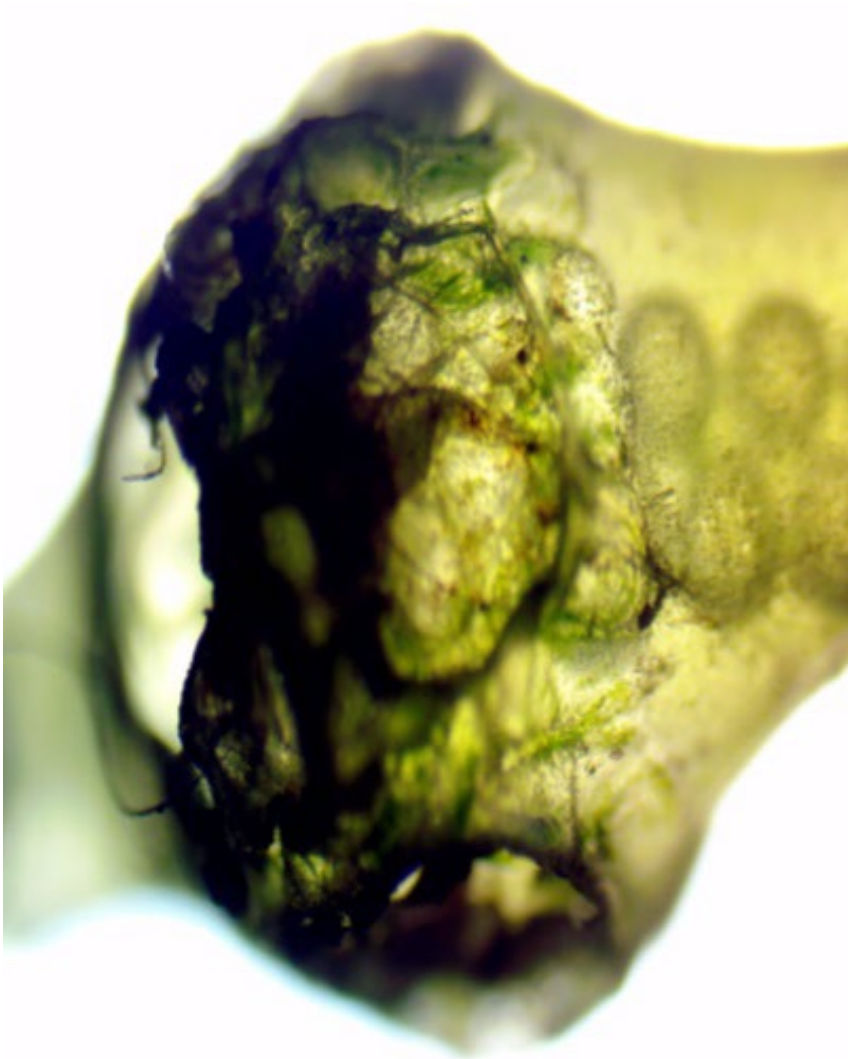
- Longest enduring and most abundant of native populations of *N. obtusa* in existence are hosted by the inland lakes of Scandinavia, Finland, Poland, and Russia
- Sustained by the ability of the unique Characeae species to deploy highly effective asexual reproductive strategies.
- Soulie-Marsche *et al.* (2002) suggests that a determining relationship may exist between latitude of occurrence and gender.



Asexual Reproductive Capabilities of Starry Stonewort

- *Nitellopsis obtusa* also possesses the ability to asexually reproduce by means of vegetative fragmentation (Skurzynski and Bociag, 2011; Bociag and Rekowska, 2012).
- Bonis and Grillas (2002) and Skurzynski and Bociag (2011) demonstrated that *Nitellopsis obtusa* is capable of regenerating an entire plant via fragments consisting of a single node.
- Bociag and Rekowska (2012) determined that the ability of Characeae species to reproduce via vegetative fragments depends upon the presence of structures containing meristematic cells, such as internodes and nodes that are capable of sustaining their function, growth, and viability long after they have become physically separated from their parent plant.

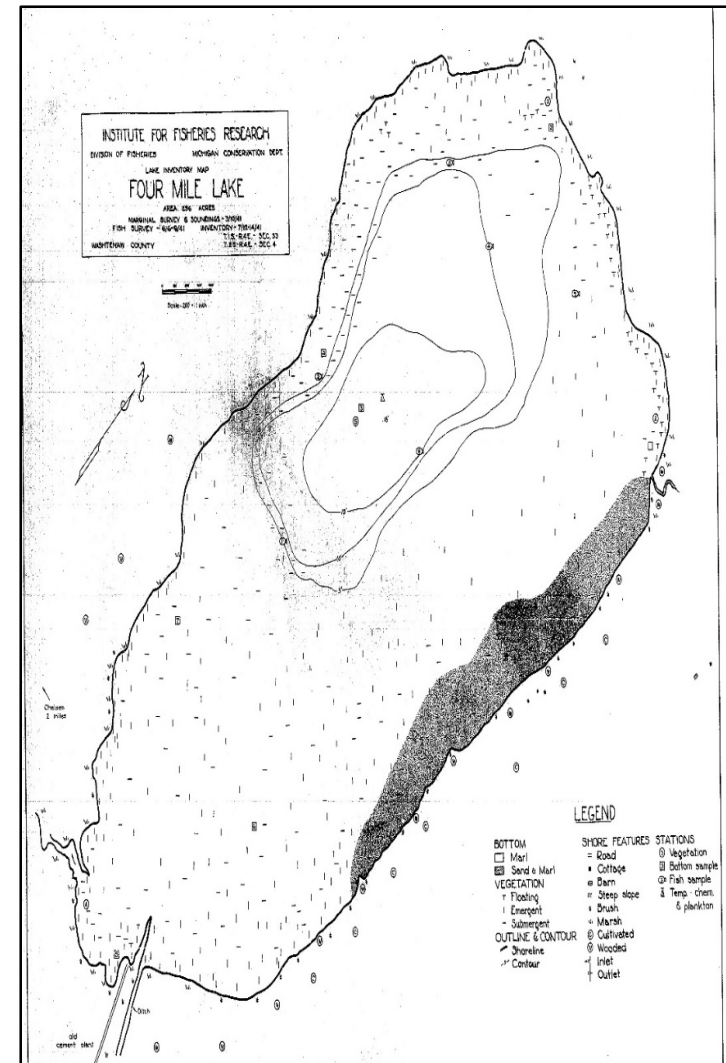
Asexual Reproductive Capabilities of Starry Stonewort





Marl Lakes: Ideal Habitat for Characeae Diversity and Abundance

Poetically described more than a century ago by Indiana state geologists Blatchley and Ashley (1900) as the “brightest gems in the corona”, stable moderately productive, aquatic macrophyte dominated marl (calcareous) inland lakes embedded in the landscape of northern temperate regions of the earth are known to host the greatest abundance and diversity of the unique family of macro-algae species (Coops *et al.*, 1999; Kufel and Kufel, 2002).



Marl Lakes: Ideal Habitat for Characeae Diversity and Abundance

- Simply do a Google search for Michigan DNR Lake Maps
- 2,700 inland lake maps available
- Surveys conducted by the **Institute for Fisheries Research**
- Maps based on surveys conducted in the 1930s and 1940s
- Maps include lake basin size, substrate composition, and depth contour
- Most lakes in the southern half of the lower peninsula host substrates consisting of marl
- The presence of marl represents a significant risk factor for Starry stonewort invasion

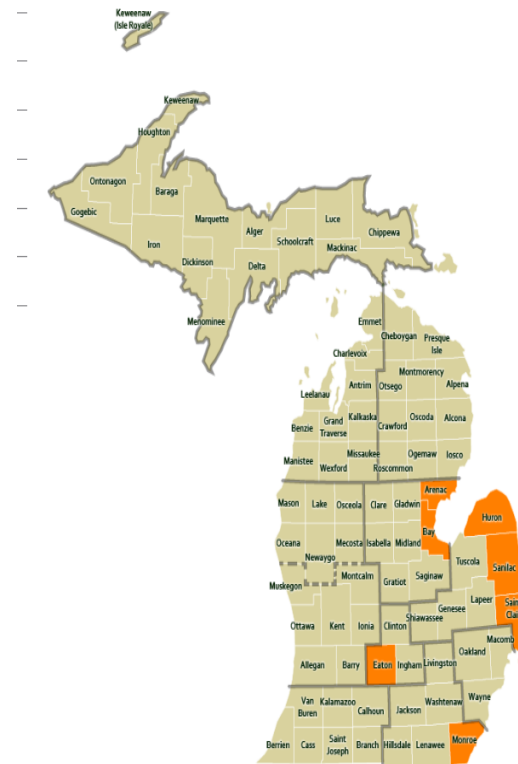
Inland Lake Maps

- Michigan boasts more than 11,000 inland lakes. Now you can access 2,700 inland lake maps online. Click on a county for a list of inland lakes in that county.

We make every effort to provide useful and accurate information. It does not warrant the information to be completely representative of current conditions.

Counties displayed in **orange** do not have maps available.

Dark borders represent **prosperity regions**. For more information on prosperity regions, [click here](#).



Marl Lakes: “The Brightest Gems in the Corona”

“Marl may be defined as a loosely consolidated form of **limestone** that is comprised of an earthy material consisting primarily of **calcium carbonate**. Marl deposits are widely scattered in the region of the Great Lakes, extending through Canada, and southward into the states of Michigan, Wisconsin and Minnesota and also the northern parts of Indiana, Illinois, and Ohio.” - Berquist, Musselman, and Millar, 1932.

Marl deposition within northern temperate inland lakes occurs as:

- inorganic marl deposition precipitated by the in-flow of cold calcium bi-carbonate saturated ground waters
- marl precipitated as a result of intense macrophyte and phytoplankton photosynthesis
- deposition of calcium carbonate inundated organic materials that occurs as calciphile macrophytes collapse, and/or die off at the end of the growing season

European Union Habitats and Species Directive criteria for identifying marl lakes:

- oligo-mesotrophic or mesotrophic (moderately productive) ecological status
- highly calcareous waters
- the ability to support abundant and diverse northern temperate Chara species

Inland Lake Characteristics that Promote Introduction and Establishment of Perennial Starry stonewort

The Special Role of Marl Lakes in Supporting Abundant Perennial Growth of *Nitellopsis obtusa*

Defined by unique physical, chemical and biological attributes that are a direct reflection of their often irregularly shaped basins that are embedded in landscapes composed of calcium carbonate-laden glacial till (Blatchley and Ashley, 1900), highly calcareous inland lakes are referred to as marl lakes, or alternatively, as ‘chara’ lakes...(Otsuki and Wetzel, 1972; Wiik, 2012).

Marl Lakes: “The Brightest Gems in the Corona”

It's wide distribution in Michigan affords a source of agricultural lime which is almost unlimited. Marl has also from time to time been employed in the manufacture of Portland cement; and, in various parts of the State where it is abundant, cement plants have been erected to utilize this product.” - Berquist, Musselman and Millar, 1932. Within Michigan's marl lakes, for example, excavators removed over 198,000 metric tons of marl in the year 1954 alone (Sorenson and Carlson, 1955).



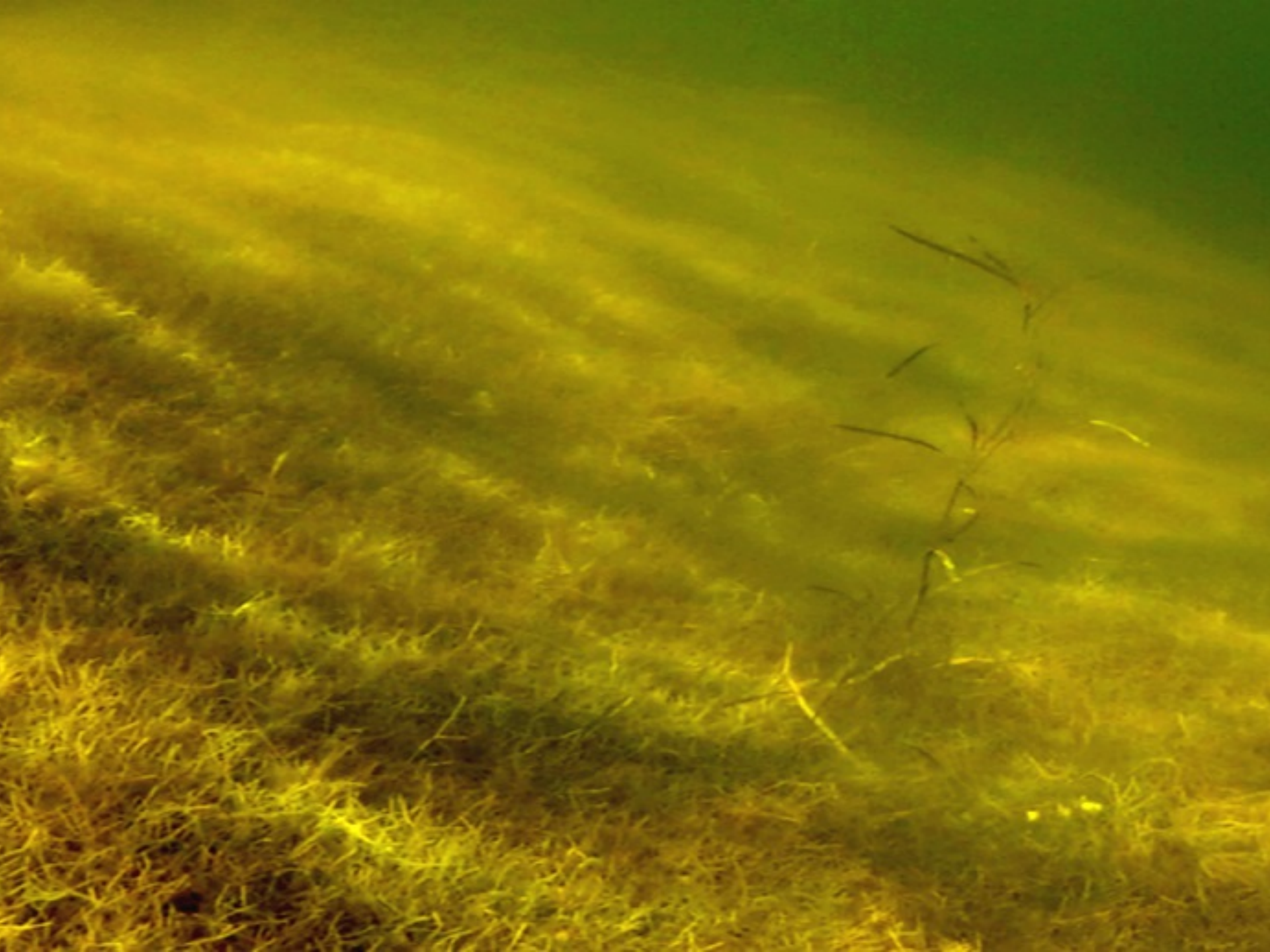
Marl Lakes: Ideal Habitat for Characeae Diversity and Abundance

Members of the diverse stonewort family promote habitat conditions that are conducive to their own growth and survival as well as to the growth of a beneficial array of often co-occurring vascular submerged macrophyte species (Jeppesen *et al.*, 1998; Coops, 2002). The existence of luxuriant Characeae communities serves as a reliable indicator of optimal water quality and physical habitat conditions (Forsberg, 1964; Blindow, 1988; Pełechaty *et al.* 2004).

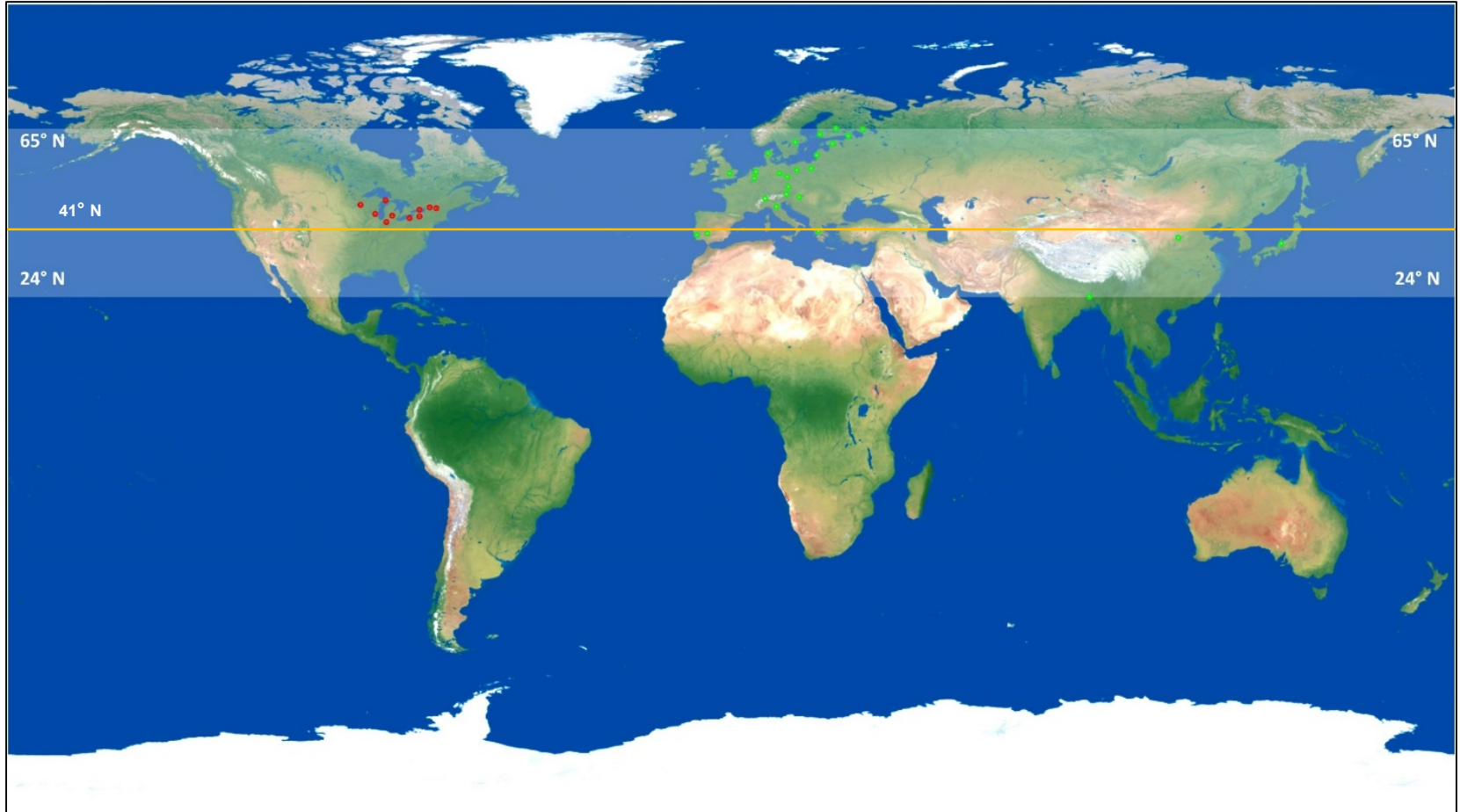


Marl Lakes: Ideal Habitat for Characeae Diversity and Abundance





Current Extant Geographic Distribution

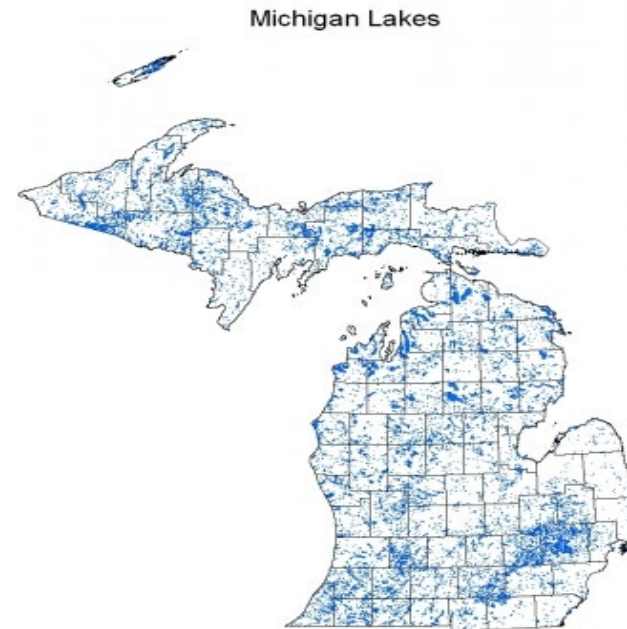
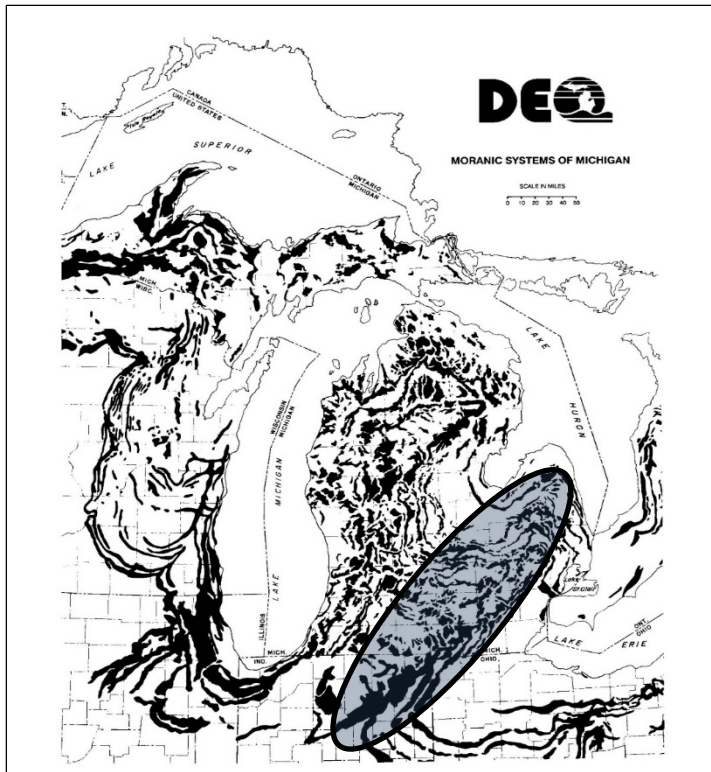


Modified Graphic: NASA

Exotic Invasive North American Geographic Distribution

- First detected as an exotic invasive in:
 - North America's St. Lawrence Seaway in 1978
(Geis *et al.*, 1981)
 - St. Clair - Detroit River system in 1983
(Schloesser *et al.*, 1986)
 - inland lakes of southeast Michigan in 2006
(Pullman and Crawford, 2010)
 - inland lakes located in seven states by 2016 - MN, WI, IN, MI, NY, PA, VT
 - Canadian provinces of Ontario & Quebec by 2017
(Midwood *et al.*, 2016; Karol and Sleith, 2017)
- 

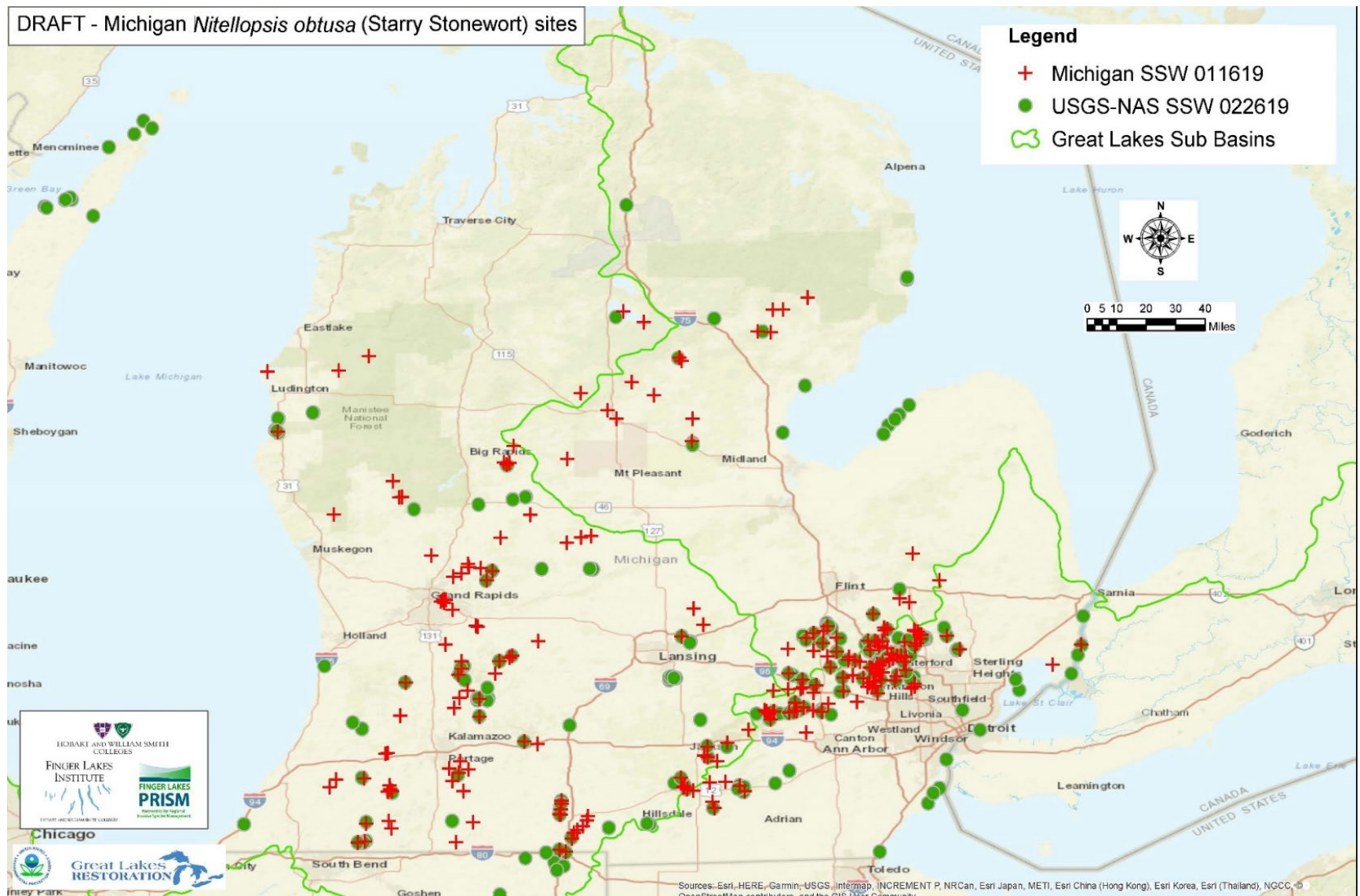
Michigan Distribution of Starry stonewort



The “rapid spread and robust growth” of *Nitellopsis obtusa* within the Great Lakes region (Escobar *et al.*, 2016) serves as a de facto indicator of the existence of an abundance of widely distributed aquatic ecosystems, including tens of thousands of moderately productive, calcium carbonate rich inland lakes that are likely to be capable of supporting the extraordinary though highly invasive submerged macrophyte.

Exotic Invasive Michigan Distribution of Starry stonewort

DRAFT - Michigan *Nitellopsis obtusa* (Starry Stonewort) sites



Michigan Distribution of Starry stonewort Invaded Lakes

County	No. of Lakes	County	No. of Lakes
Allegan	3	Livingston	27
Barry	11	Macomb	1
Branch	13	Mason	2
Calhoun	2	Mecosta	4
Cass	9	Midland	1
Clare	4	Montcalm	4
Clinton	4	Muskegon	1
Genesee	5	Newaygo	3
Gladwin	4	Oakland	62
Hillsdale	3	Oceana	1
Iosco	1	Ogemaw	4
Isabella	1	Roscommon	3
Jackson	9	Shiawassee	1
Kalamazoo	6	St. Clair	1
Kent	17	St. Joseph	3
Lake	1	Van Buren	6
Lapeer	4	Washtenaw	4
Lenawee	4		

41° N



Inland Lake Characteristics that Promote Introduction and Establishment of Perennial Starry stonewort

Stable Clear Water Macrophyte Dominated Ecosystems

- stable state equilibria is achieved by self-perpetuating positive feedback mechanisms that act to facilitate and maintain water clarity and enhanced light availability
- Macrophytes facilitate increases in water clarity and light availability:
 - by inhibiting the resuspension of bottom particulate
 - by promoting the deposition of fine organic particulate matter
 - by providing phytoplankton grazing zooplankton with a protective refuge from predation by fish
 - by limiting the amount of nutrients available for phytoplankton growth
 - by releasing allelopathic substances that inhibits the growth of phytoplankton, and other forms of light attenuating algae

Reference: Scheffer *et al*, 1993; Scheffer, 1998

Inland Lake Characteristics that Promote Introduction and Establishment of Perennial Starry stonewort

Let there be Light!



Light availability is one of the **primary** factors in governing the occurrence, reproduction, morphology, abundance, and distribution of *Nitellopsis obtusa* (Blindlow, 1992; Pelechaty *et al.*, 2004; Hilt *et al.*, 2006). The ability of the deep water adept Characeae species to thrive and reproduce in low light conditions exceeds that of most northern temperate region submerged macrophytes, and is analogous to shade adept terrestrial species such as African violets and *Phalaenopsis* orchids (Runkel, 2006).

Inland Lake Characteristics that Promote Introduction and Establishment of Perennial Starry stonewort

Let there be Light: Mesotrophic or Oligo-Mesotrophic Trophic Status

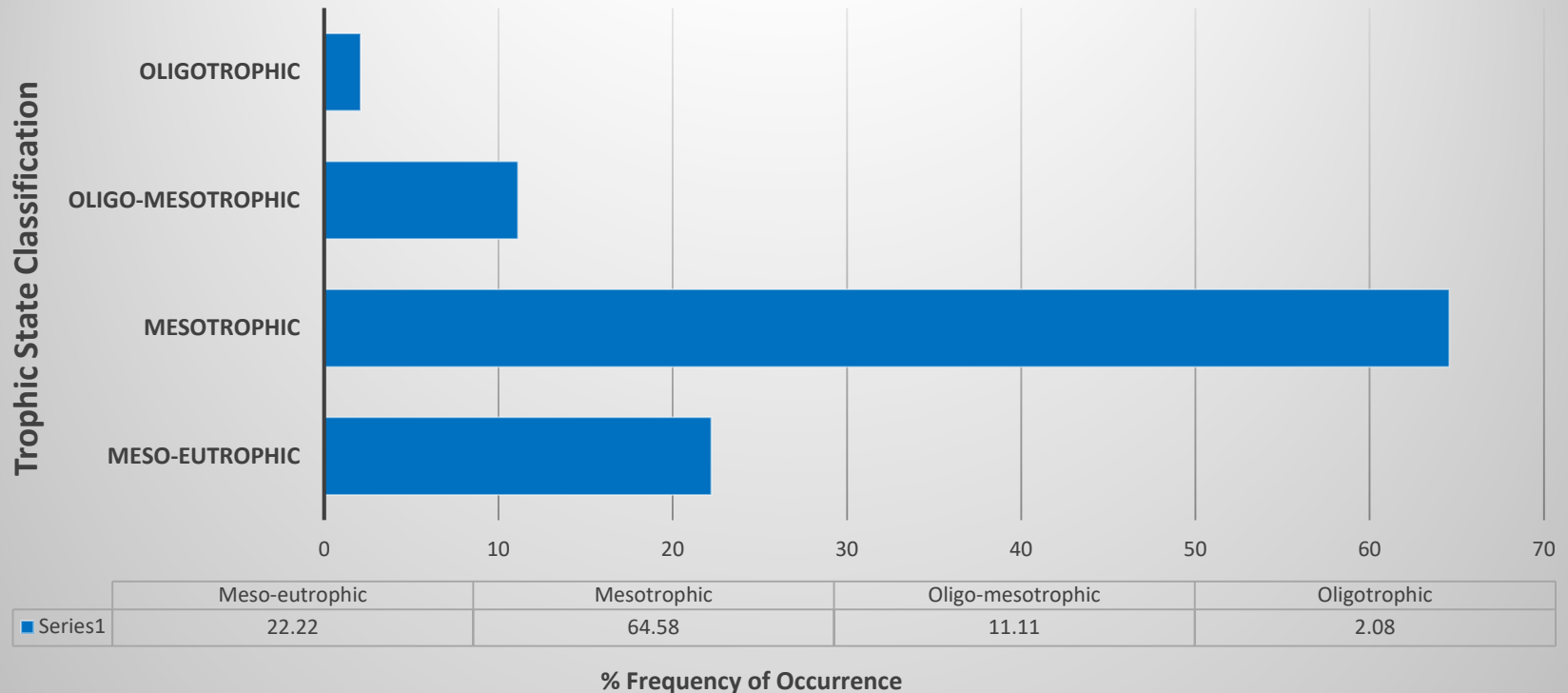
- Within its native range, *N. obtusa* is recognized as an increasingly rare inhabitant of northern temperate inland lakes hosting stable light inundated moderately productive ecosystems.
- Inland lakes capable of supporting the successful introduction and establishment of *N. obtusa* within its native range possess trophic classifications range from oligo-mesotrophic to meso-eutrophic.
- The importance of preserving stable clear water equilibria is illustrated by the fact that abundant *N. obtusa* as well as an array of beneficial submerged aquatic plants that once flourished on the Eurasian continent have now been extirpated, or are threatened due to the light attenuating influences of phytoplankton.

References: Blindlow, 1992; Stewart, 2004; Pelechaty *et al.*, 2004

Inland Lake Characteristics that Promote Introduction and Establishment of Perennial Starry stonewort

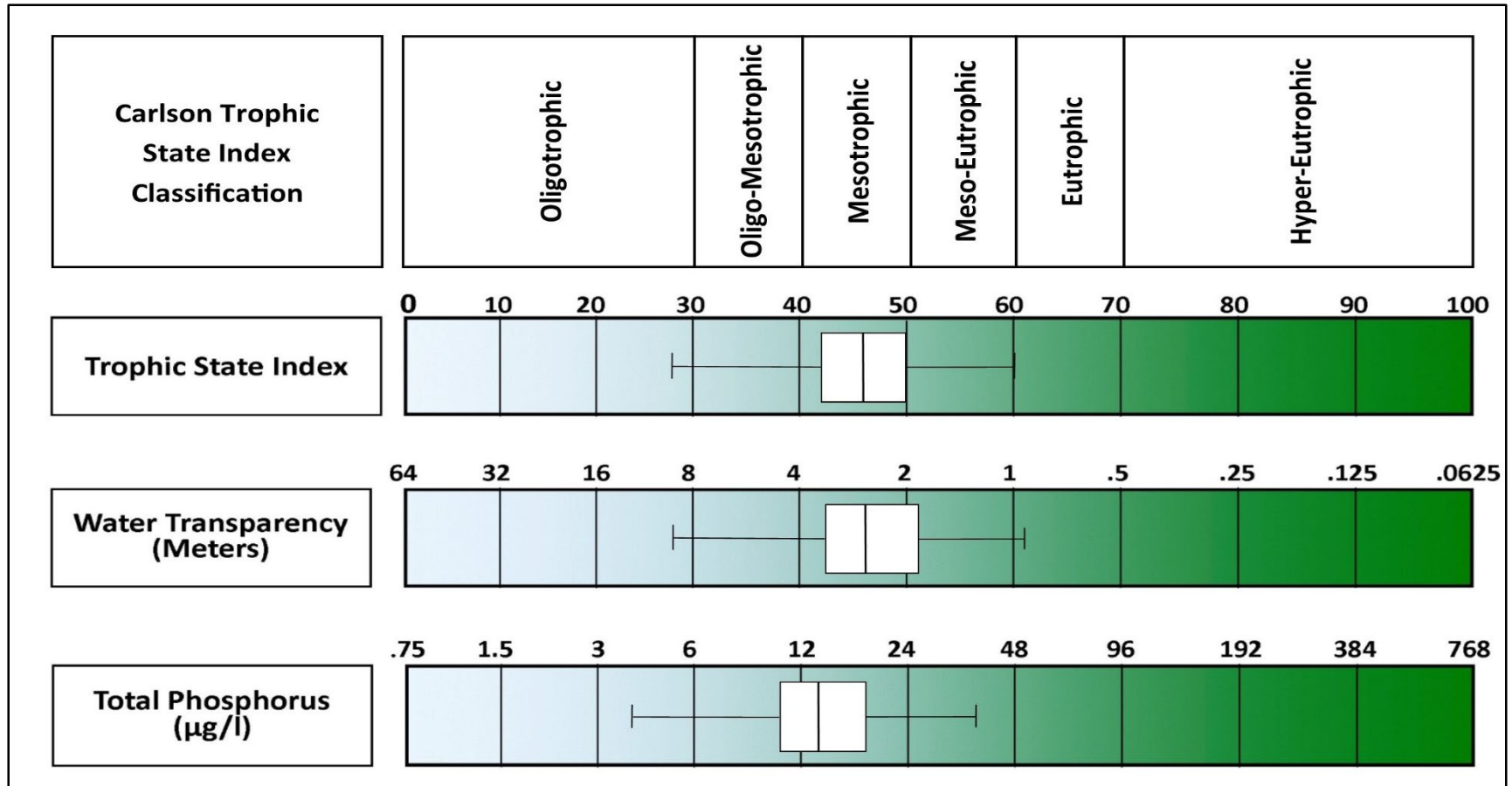
Carlson Trophic State Index Status of Invaded Inland Lakes in Michigan

Secchi Disk Transparency Derived Carlson Trophic State Classification for *N. obtusa* Colonized MI Lakes (N = 144)



Inland Lake Characteristics that Promote Introduction and Establishment of Perennial Starry stonewort

Carlson Trophic State Index Status of Invaded Inland Lakes in Michigan



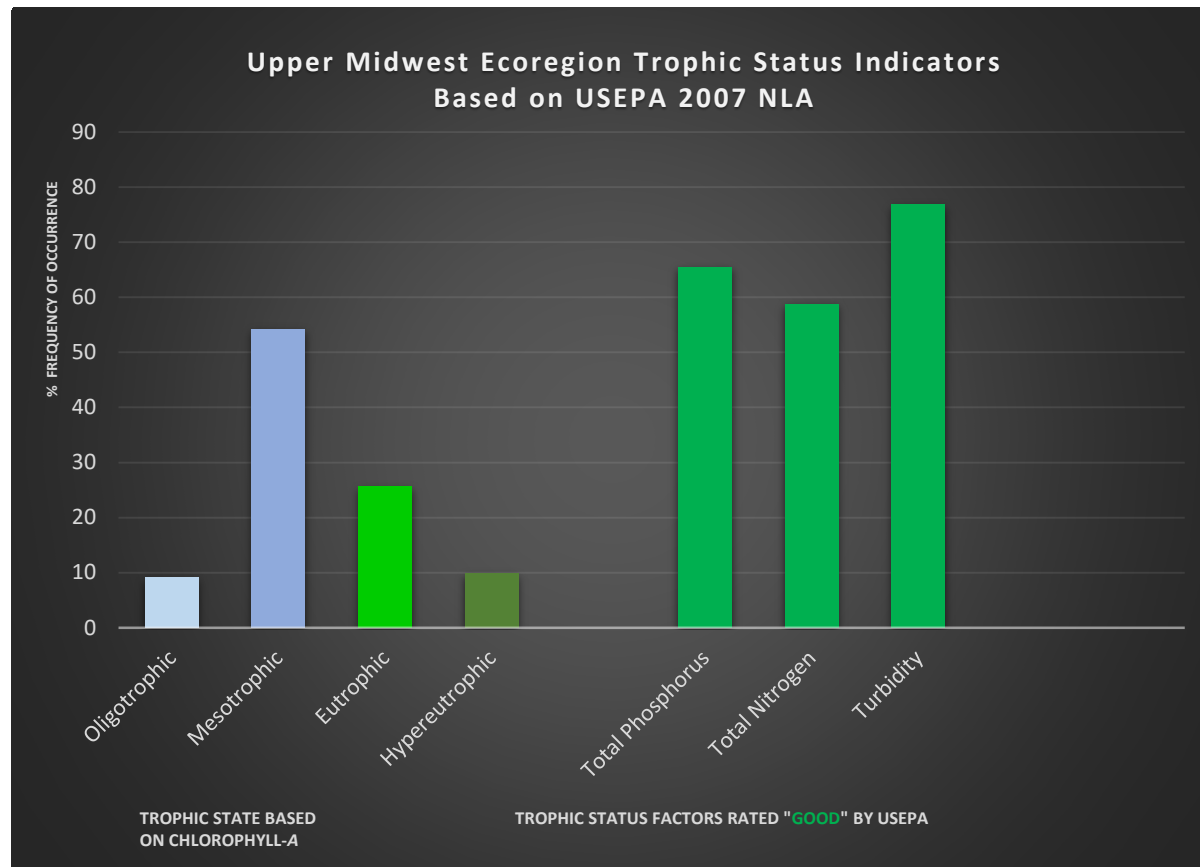
Inland Lake Characteristics that Promote Introduction and Establishment of Perennial Starry stonewort

Carlson Trophic State Index Status of Invaded Inland Lakes in Michigan

	N = 144		N = 101	
Carlson Trophic State Indices	Secchi Disk Transparency (M)	Secchi Disk Transparency (TSI _{sd})	Total Phosphorus (µg/l)	Total Phosphorus (TSI _{tp})
Minimum	0.94	28	4	26
Maximum	9.75	60	41.8	57
Range	8.81	32	41.8	31
Mean	2.89	44.88	15.92	42.4
Median	2.8	46	14.5	42
Mode	1.52, 1.79, 2.74	43, 36	12	40, 42

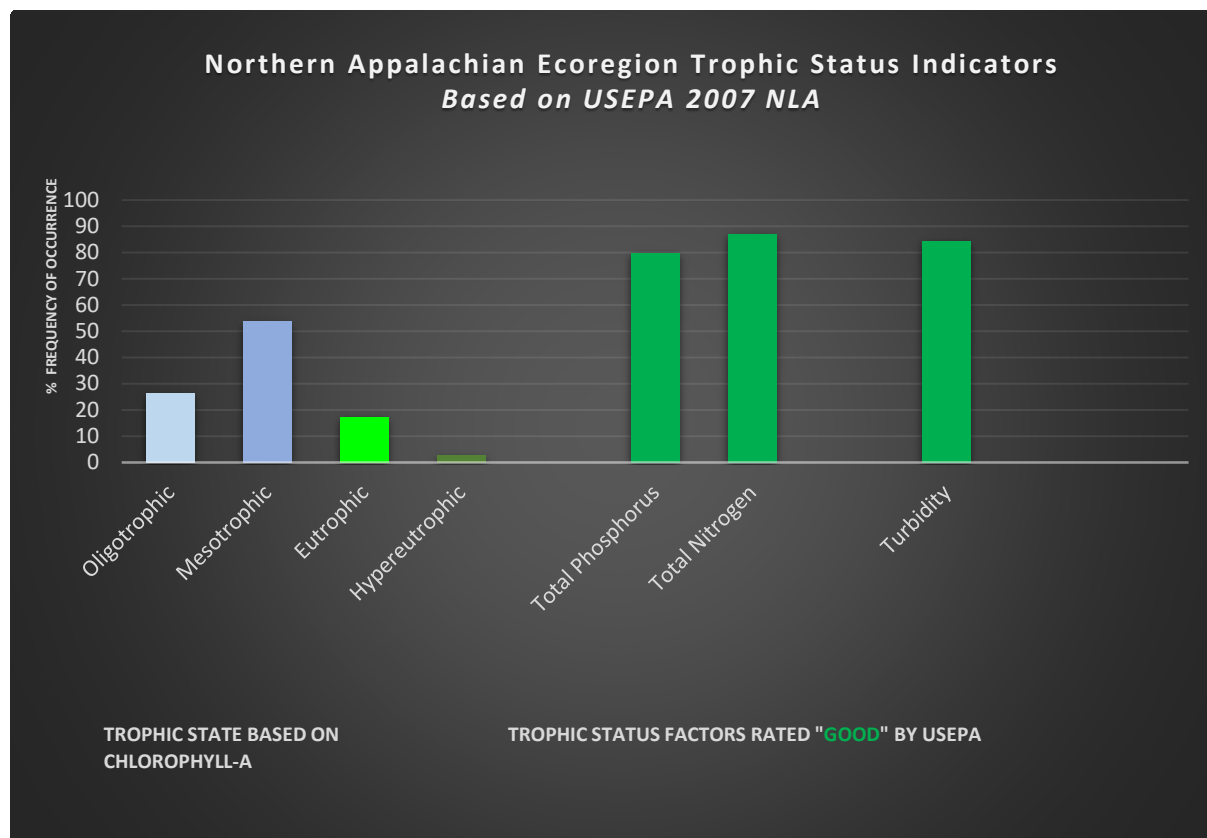
Inland Lake Characteristics that Promote Introduction and Establishment of Perennial Starry stonewort

Upper Midwest Ecoregion Inland Lake Trophic Status Based on 2007 NLA



Inland Lake Characteristics that Promote Introduction and Establishment of Perennial Starry stonewort

Northern Appalachian Ecoregion Inland Lake Trophic Status Based on 2007 NLA



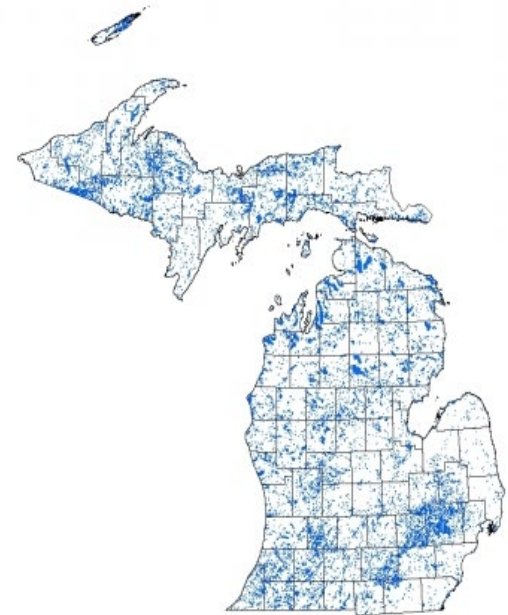
Inland Lake Characteristics that Promote Introduction and Establishment of Perennial Starry stonewort

Inland Lake Trophic Status in the UMW and NAP Based on 2007 NLA

Illustrating the vital role of stable submerged macrophyte dominated calcium carbonate rich ecosystems in supporting and sustaining ecologically sensitive Characeae species, the Upper Midwest (UMW), and Northern Appalachians (NAP) regions of North America that are known to possess the highest proportion (54% of 20,788 total inland lakes of 4 ha or greater in size) of moderately productive inland lakes in the world have thus far experienced the vast majority of the successful introductions of *Nitellopsis obtusa* that are known to have occurred in North America over the past forty years.

Colonization Potential of Starry stonewort in Michigan

Oligo-mesotrophic and mesotrophic conditions fostered and sustained by stable state aquatic macrophyte dominated ecosystems required for the successful introduction of invasive *Nitellopsis obtusa* are found in approximately 75% of the 6,537 inland lakes in Michigan of \geq 4 ha (10 acres) in size.



Graphic: MiCorps

Inland Lake Characteristics that Promote Introduction and Establishment of Perennial Starry stonewort

The Critical Role of Calcium Carbonate



Inland Lake Characteristics that Promote Introduction and Establishment of Perennial Starry stonewort

The Critical Role of Calcium Carbonate

- The most abundant occurrences of *N. obtusa* are strictly limited to moderately productive freshwater ecosystems possessing high alkalinity (hardwater) levels that are associated with the prevalence of calcium carbonate (CaCO_3) in the form of unbound calcium (Ca^{2+}), and calcium bi-carbonate (CaHCO_3^+) ions.
- Alkalinity in most northern temperate hardwater inland lakes is present as soluble calcium bi-carbonate, and the term bi-carbonate alkalinity is often expressed as mg/L of calcium bi-carbonate (HCO_3).
- The primary source for hardwater conditions within most moderately productive northern temperate region inland lakes within the native and invasive range of *Nitellopsis obtusa* are thick deposits within the lake's basin consisting of an amorphous, readily dissolved form of calcium carbonate referred to as marl.

Reference: Wetzel, 2001

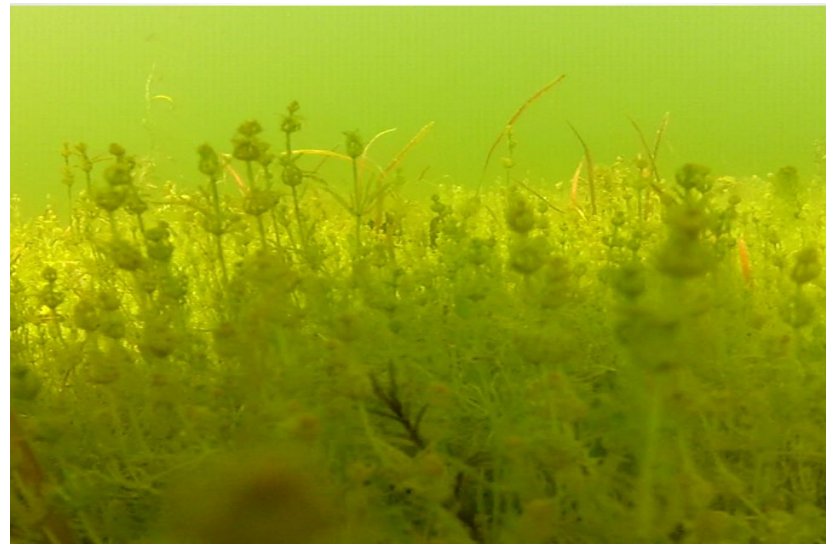
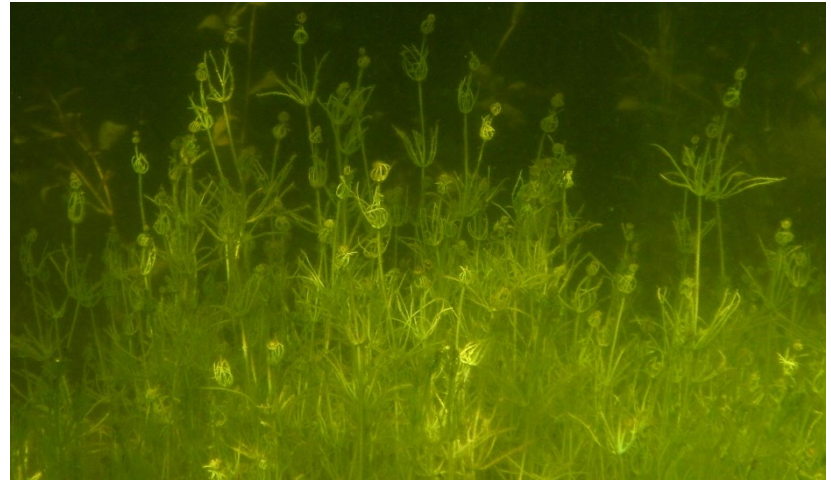
Inland Lake Characteristics that Promote Introduction and Establishment of Perennial Starry stonewort

The Critical Role of Calcium Carbonate

The most abundant colonies of *N. obtusa* are known to occur in Poland, Russia, and Scandinavia (Soulie-Marsche *et al.*, 2002) as well as within the North American Laurentian Great Lakes region (Geis *et al.*, 1981; Schloesser *et al.*, 1986; Pullman and Crawford, 2010; Sleith *et al.*, 2015; Midwood *et al.*, 2016), where due to the prevalence of **marl**, alkalinity in the vast majority of inland lakes ranges from **110 mg/l** to greater than **240 mg/l** calcium carbonate equivalents (Otsuki and Wetzel, 1972; Hutchinson, 1975; Fuller and Minnerick, 2008; Midwood *et al.*, 2016).

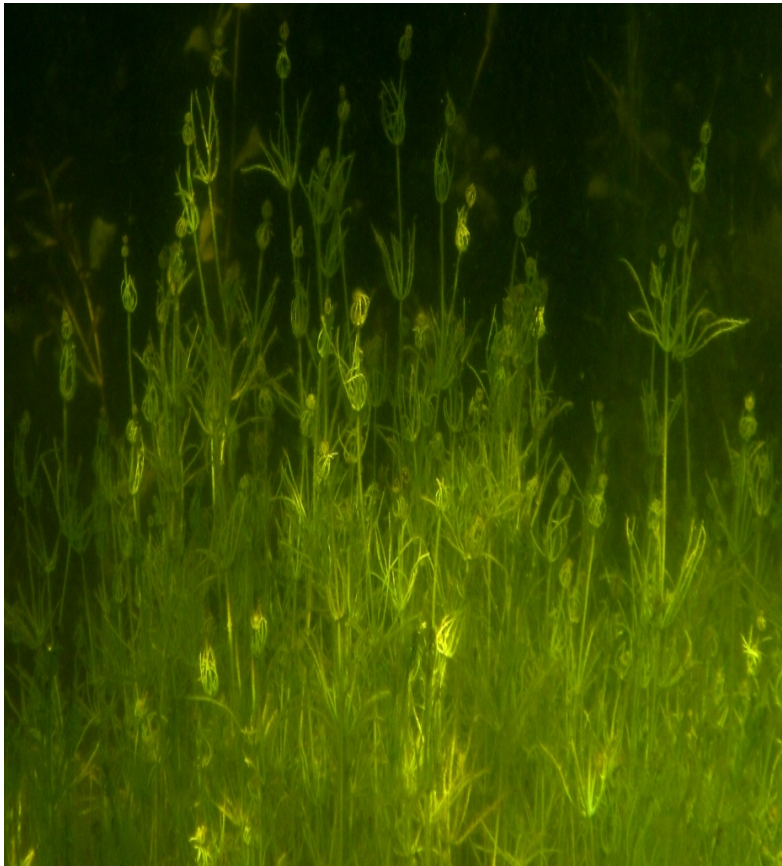
Co-occurrence of *Chara vulgaris*

- *Chara vulgaris*
- Co-Occurs in all Michigan Starry Stonewort colonized lakes
- Native to Michigan inland lakes
- Requires relatively high calcium carbonate levels
- Length and abundance positively correlated with high calcium carbonate levels
- Depth: 2 ft. – 8 ft
- Requires good water clarity
- Intermingles with Starry Stonewort in shallow water



Inland Lake Characteristics that Promote Introduction and Establishment of Perennial Starry stonewort

The Special Role of 'Chara' Lakes in Supporting Abundant Perennial Growth of *Nitellopsis obtusa*



Exotic *Nitellopsis obtusa*

invaded inland lakes in North

America often host abundant

growth of native *Chara*

vulgaris.

Inland Lake Characteristics that Promote Introduction and Establishment of Perennial Starry stonewort

The Importance of Lake Morphology

In conjunction with:

- stable freshwater ecosystems hosting moderate levels of bio-productivity
- relatively clear waters
- high calcium carbonate levels
- the ability to support beneficial submerged macrophyte communities, and in particular members of the Characeae family, including *N. obtusa*, is also dependent upon the physical dimensionality of host inland lake basins.
- Moderately productive inland lakes that are characterized by shallow basins, highly irregular shorelines, shallow bays, and gradually sloping bottom contours, the area capable of supporting submerged macrophytes, including those comprised of Characeae species, may approach 100%.

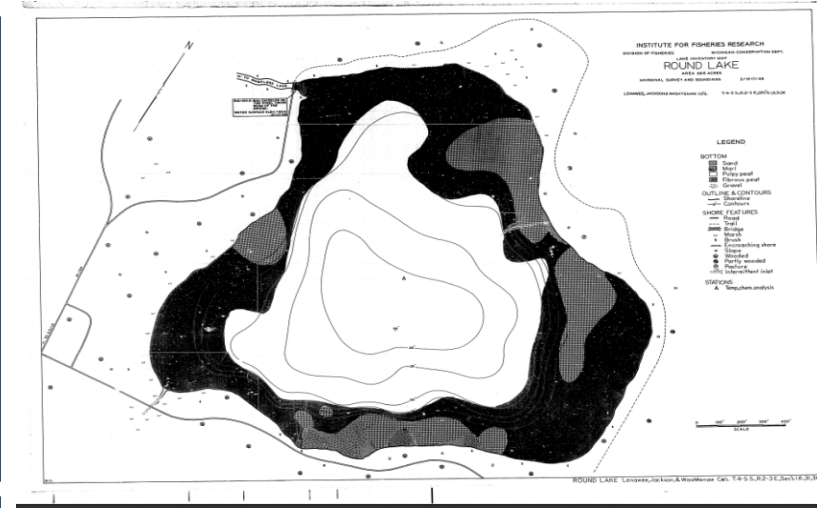
Inland Lake Bathymetry v. Secchi Disk Transparency: Important Determinants of Starry Stonewort Colonization Patterns

Round Lake| (Jackson, Lenawee, Washtenaw)

Maximum Depth: 52 Ft.

Secchi Disk Transparency: 11 Ft.

Max. Depth Starry Stonewort: 16 Ft.

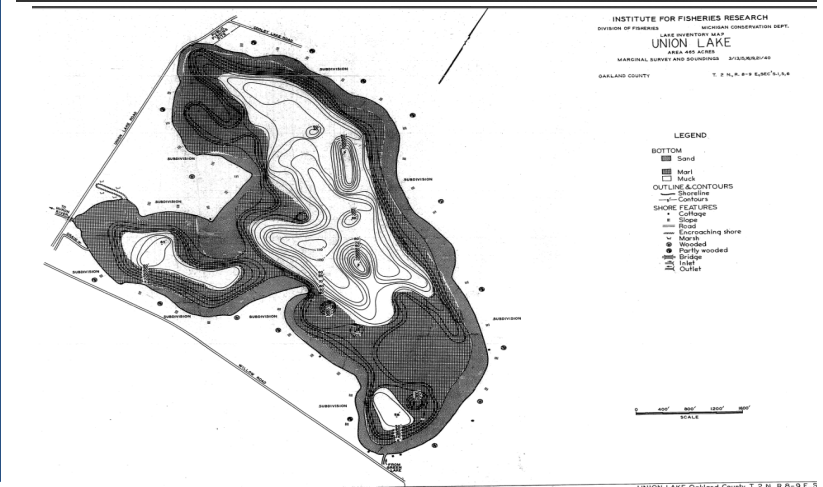


Union Lake (Oakland County)

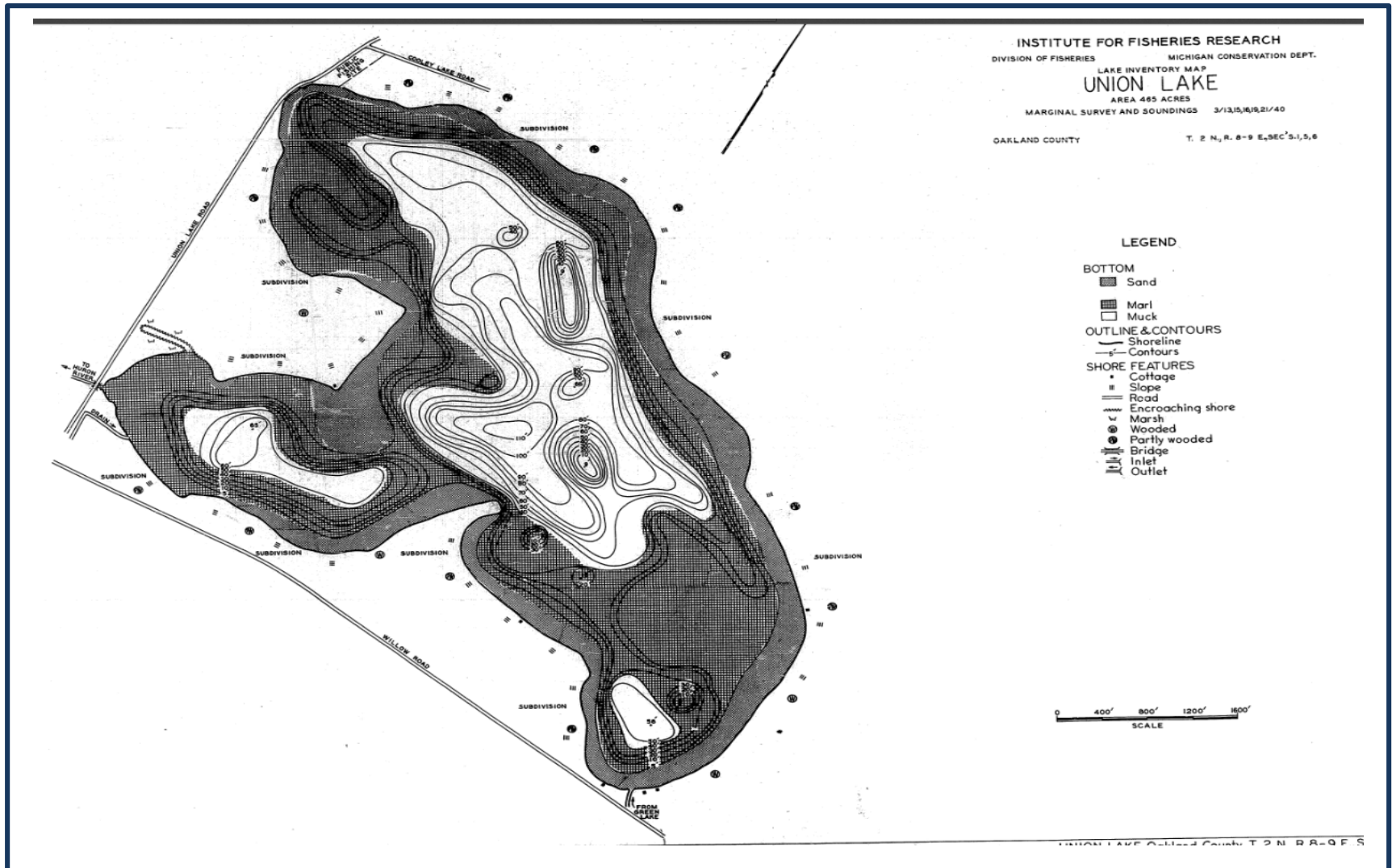
Maximum Depth: 110 Ft.

Secchi Disk Transparency: 19 Ft.

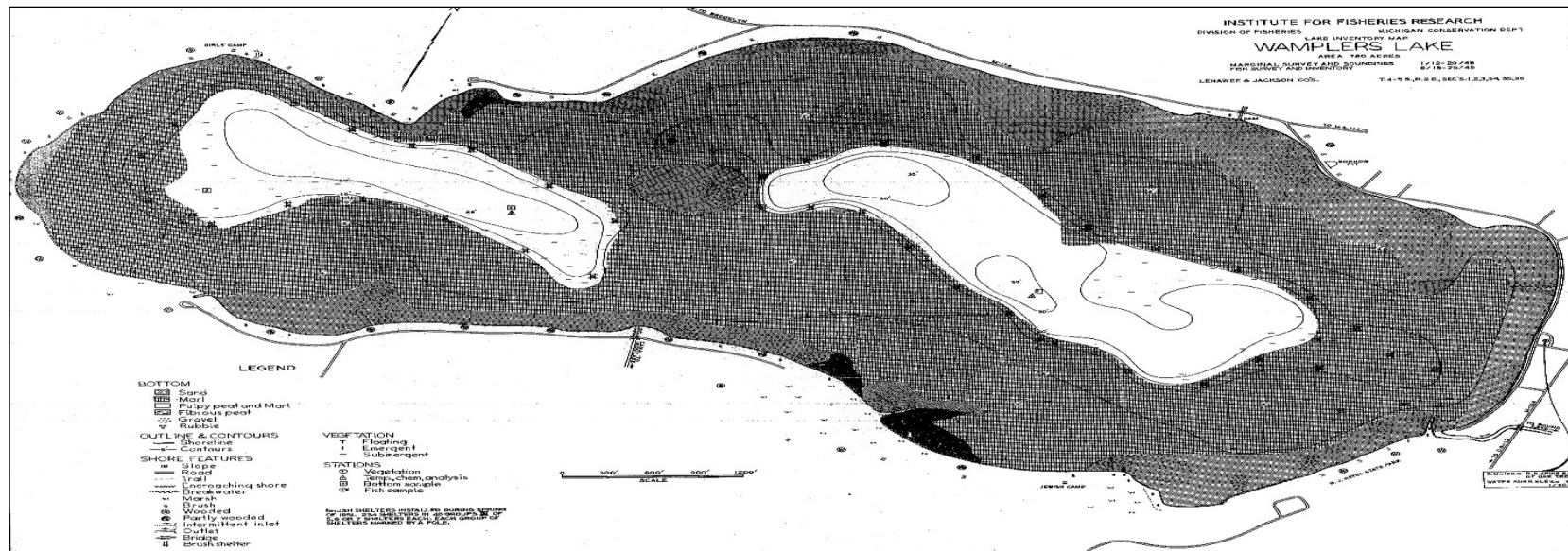
Max. Depth of Starry Stonewort: 29 Ft.



Inland Lake Bathymetry: An Important Determinant of Starry Stonewort Colonization Patterns



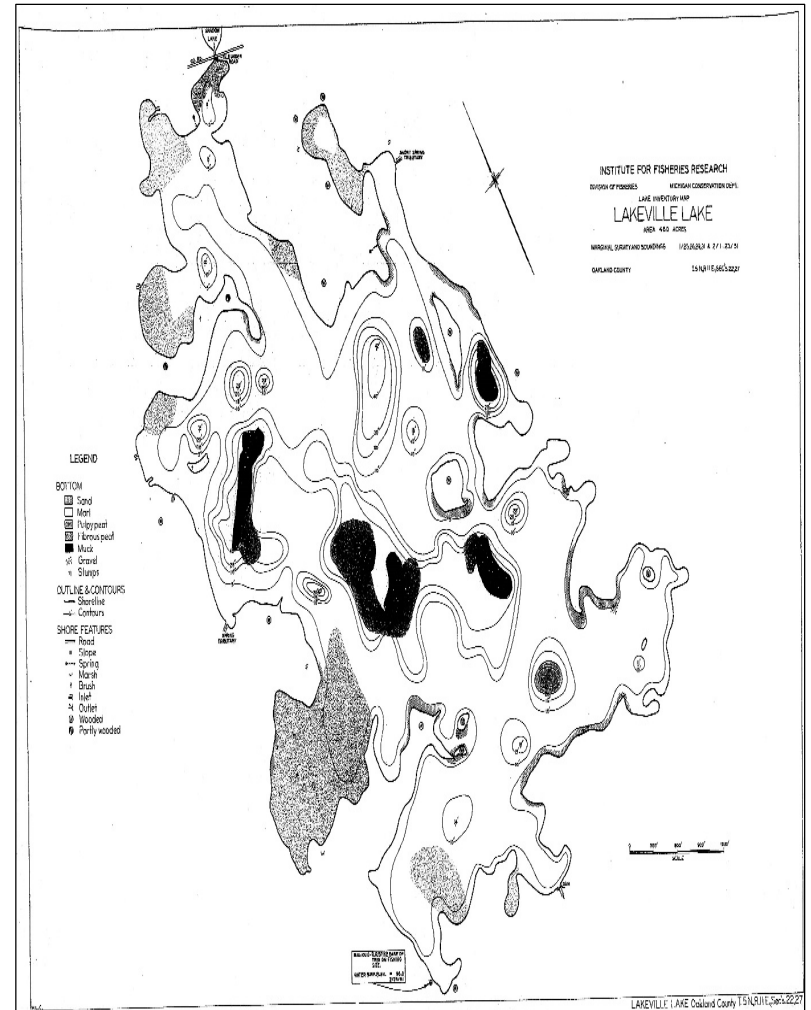
Inland Lake Characteristics that Promote Introduction and Establishment of Perennial Starry stonewort



- Wamplers Lake, a 792 acre moderately productive inland lake hosts marl laden substrates in approximately 75% of its basin
- Hosts calcium bi-carbonate saturated hard waters possessing alkalinity levels ranging from 160-240 mg/l; hosts deeper areas that allow *N. obtusa* to survive warm summer water temps.
- Formed dense monotypic meadows that rapidly inundated large portions of the lake's gradually sloping littoral area in mid-to-late spring of 2007
- Wamplers Lake's bi-carbonate saturated shallow waters provided optimal growth conditions for what would have been one of the most prolific invasions of *N. obtusa* to have been observed within the North American Laurentian Great Lakes at that time.

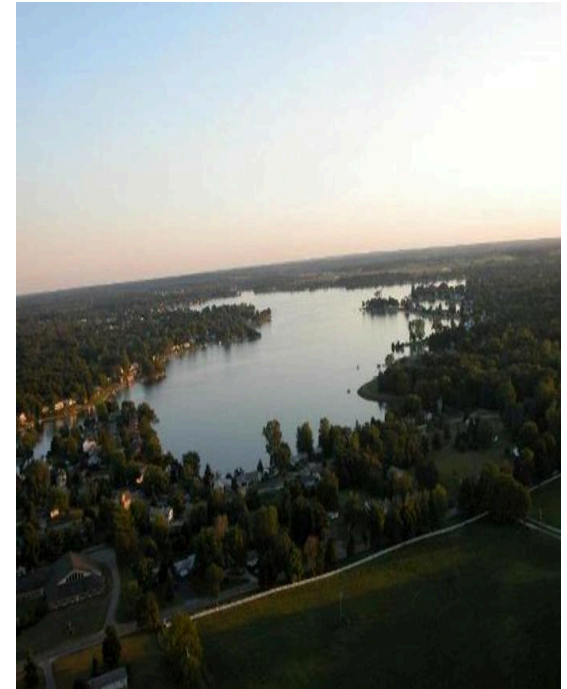
Inland Lake Characteristics that Promote Introduction and Establishment of Perennial Starry stonewort

- Lakeville Lake, 460 acres, hosts thick marl formations that are distributed throughout large portions of its irregularly shaped basin.
- Possesses a stable, submerged macrophyte dominated mesotrophic ecosystem.
- Basin hosts a large gradually sloping area of shallow water ranging in depth from 1.5 to 4.5 meters in addition to several relatively deep 'holes' that range in depth from six meters to greater than twenty meters.
- Supports abundant growth of invasive *Potamogeton crispus* and *Myriophyllum spicatum*, and within its quiet bays and wind protected areas, abundant perennial growth of *Nitellopsis obtusa*.



Other Important Factors Determining Distribution and Abundance of Starry Stonewort in Michigan Inland Lakes

- calcium carbonate levels that often exceed 100 mg/l, equal to levels found in Scandinavia and Russia
- Starry Stonewort capable of colonizing depths of up to 1.5 x greater than Secchi disk transparency
- lake shapes, shoreline ratios, bottom contours, and shallow bays capable of supporting large submerged macrophytes communities



Reference: Fuller and Taricska (2011)

Inland Lake Characteristics that Promote Introduction and Establishment of Perennial Starry stonewort

A Preference for Quiet Waters

- Precariously anchored to the upper most layer of fine particulate substrates by extraordinarily delicate translucent rhizoids (Pelechaty *et al.* 2014), *N. obtusa* possesses a fragile ecorticate structure, (Bharathan, 1983) that has evolved to prefer quiet undisturbed waters.
- Water energy is considered a particularly important factor in governing the distribution of Characeae species (Garcia, 1994), with most members of the diverse family occurring in low energy, quiet water habitats where they are capable of rapidly establishing abundant meadows (Schubert and Blindow, 2003).
- The most abundant occurrences of *N. obtusa* are primarily limited to the gradually sloping littoral areas of moderately productive inland lake basins that are sheltered from the deleterious influences of wind and wave action (Pelechaty *et al.*, 2014).
- Wind and wave protected areas that occur in lakes, depending upon the prevailing wind direction and velocity, are characterized by short fetch distances (Wetzel, 2001).
- Midwood *et al.* (2016) concluded that *N. obtusa* was much more likely to occur in areas where the mean fetch was less than 500 - 600 meters. The authors of the study also suggested the existence of a negative relationship between fetch, and occurrences of *N. obtusa*, with the disturbance sensitive species occurring much more frequently in wind sheltered areas.

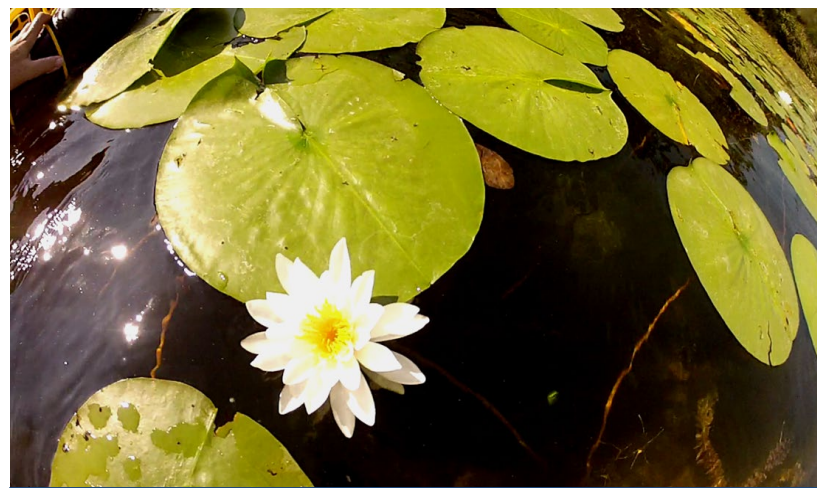
Inland Lake Characteristics that Promote Introduction and Establishment of Perennial Starry stonewort

Capable of thriving at the cold, deep, light deprived outer edges of host littoral zones and of rapidly forming monotypic meadows of substantial density and height, the total area of cover and abundance of *Nitellopsis obtusa* meadows has been positively correlated to the size of host inland lake littoral areas. The size of the area within a particular inland lake that is capable of supporting the growth of submerged macrophytes (the littoral area) is known to be directly proportional to lake surface area, maximum depth, mean depth, and Secchi disk transparency (Barko and Smart, 1981; Gasith and Hoyer, 1998).

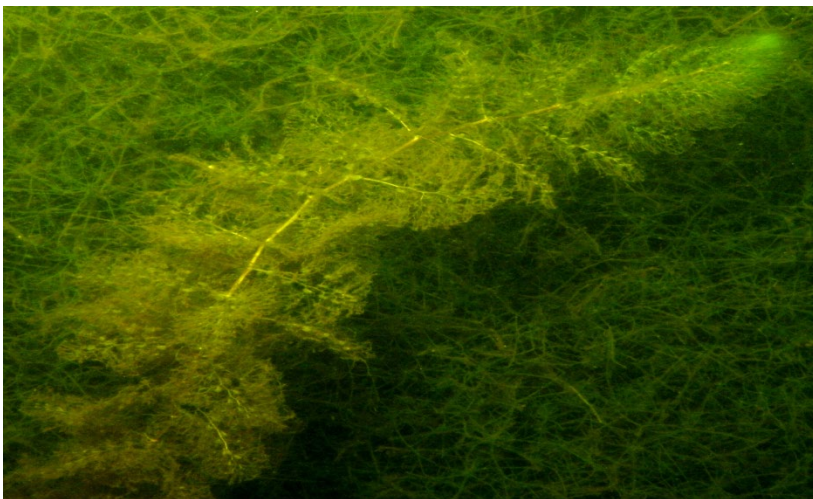
Aquatic Plants Capable of Co-Existing with Starry Stonewort Meadows



Ceratophyllum demersum (Coontail)



Nymphaea odorata (White water lily)



Utricularia vulgaris (Common bladderwort)



Potamogeton zosteriformis (Flat-stem pondweed)

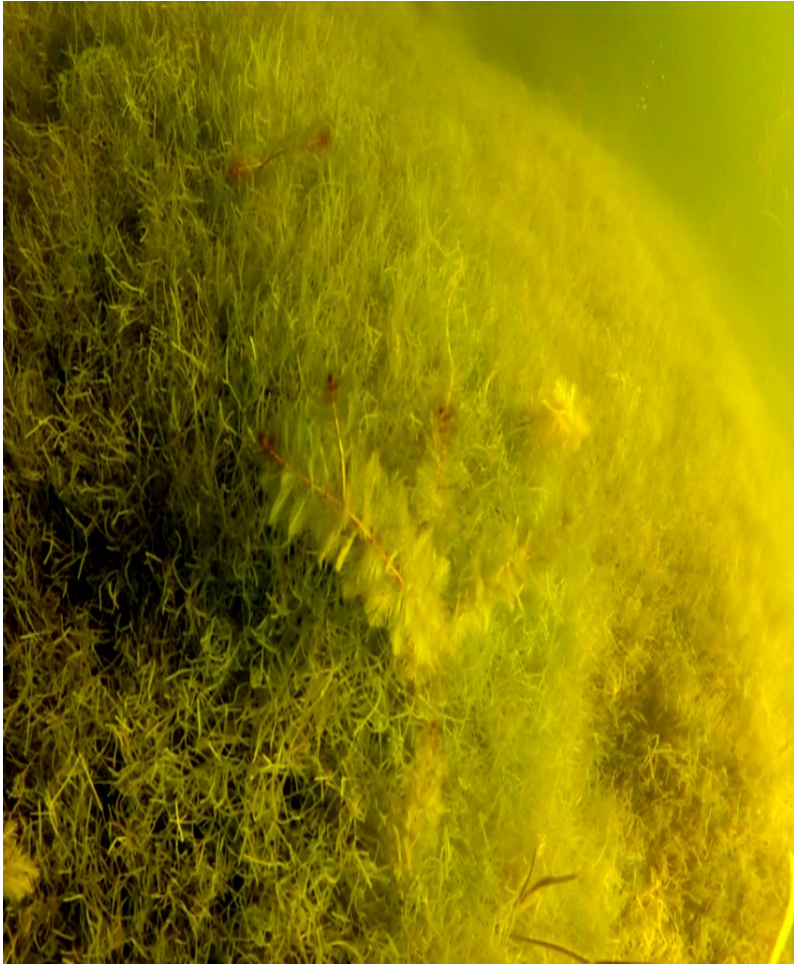
Co-occurrence of Eurasian Water Milfoil

- *Myriophyllum spicatum*
- Native to Europe and Asia
- Co-occurs with Starry Stonewort in European Inland Lakes
- Co-occurred in 88% (106/120) of 2012 Starry Stonewort Reported Inland Lakes in Michigan
- Trophic State Index preference equal (CTSI = 35 – 56)
- Starry Stonewort and Eurasian Water Milfoil compete for littoral dominance





The Influence of Starry stonewort on invaded lakes



Capable of producing volumes of bio-mass that exceeds the combined bio-mass of all other native and exotic macrophytes present within invaded inland lakes (Pullman and Crawford, 2010; Brainard and Schulz, 2017), *Nitellopsis obtusa* is a powerful ecosystem engineer that is capable of deploying several physical, chemical, and biological mechanisms that are known to foster and sustain habitat conditions that enhance its own growth, propagation, and long term survival (Kufel and Ozimek, 1994; Coops, 2002; Van Donk and Van de Bund, 2002; Hilt *et al.*, 2010).

Influence of Starry Stonewort on Inland Lake Trophic State Conditions

Charophyte meadows:

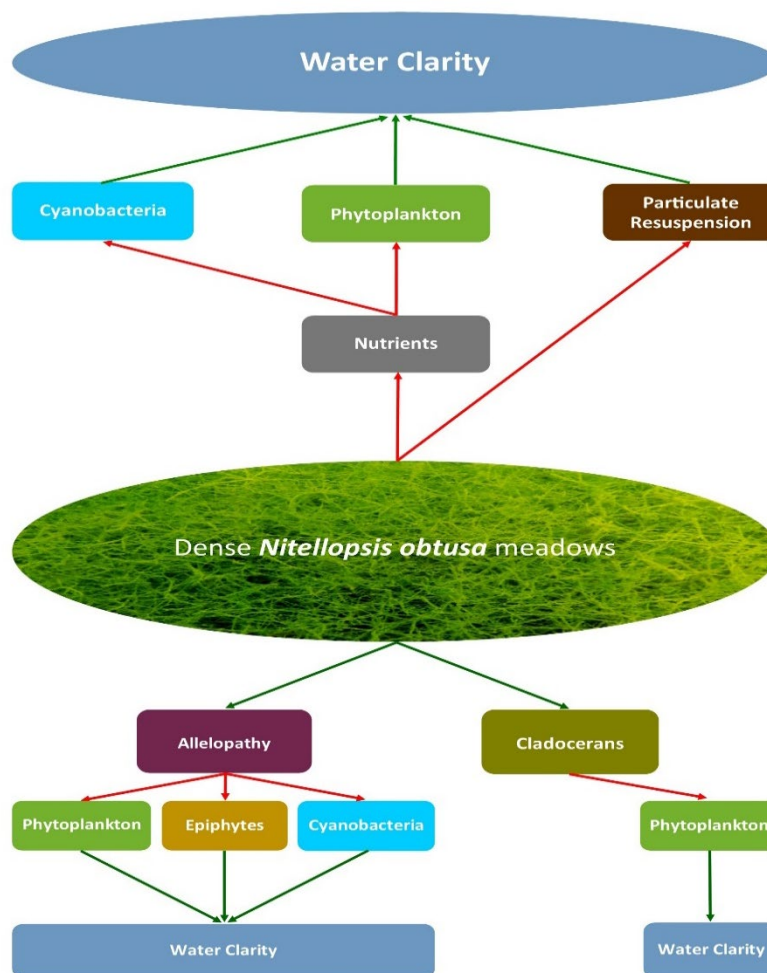
- increase water clarity by minimizing re-suspension of particulate matter
- release allelopathic substances
- provide complex habitat for zooplankton
- utilizes and precipitates calcium carbonate causing immobilization of phosphorus, thus inhibiting primary production



Above, *Nitellopsis obtusa*
precipitating calcium carbonate

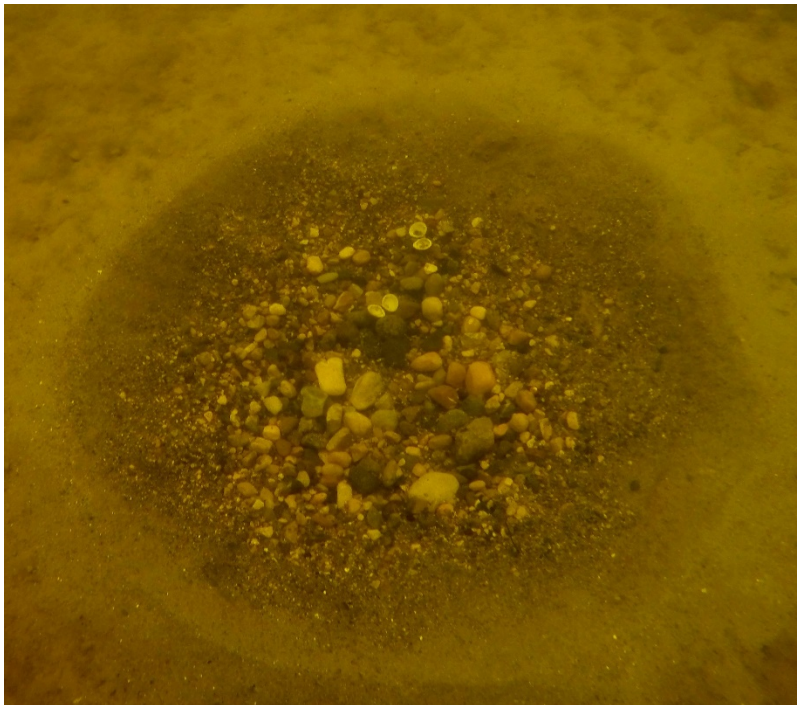
Reference: Kufel and Kufel, 2002

Influence of Starry Stonewort on Inland Lake Trophic State Conditions



Impact of Dense Monotypic Starry Stonewort Meadows on Inland Lake Littoral Habitat

- Loss of access to critical fish spawning areas just as inland lake water temperatures become suitable (45°- 50° F) for bluegill and largemouth bass spawning
- Loss of access to critical coarse woody habitat





Impact of Dense Starry Stonewort Meadows on Inland Lake Littoral Habitat

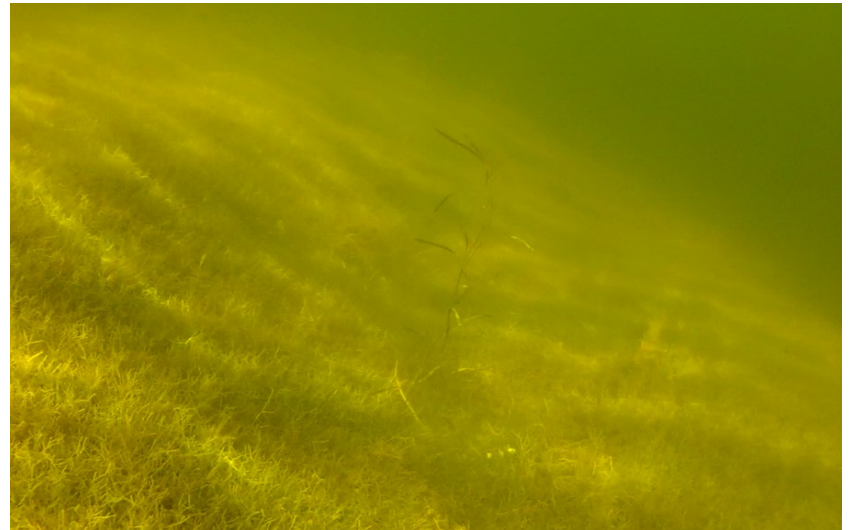
Invasive macrophyte meadows:

- form dense benthic barriers
- alter or eliminate native submerged aquatic plant communities
- prevent access to fish spawning substrate and coarse woody habitat
- eliminates optimal growth habitat for fish fry



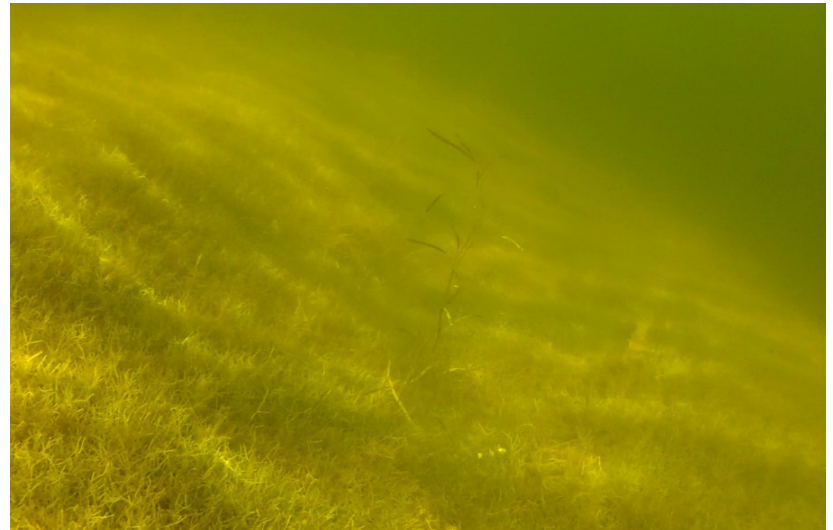
Impact of Dense Monotypic Starry Stonewort Meadows on Inland Lake Littoral Habitat

Dense aquatic meadows of Starry Stonewort eliminate or significantly reduce vertical habitat structural complexity that is created by aquatic plant diversity and that provides optimal growth conditions and refuge for the fry and juveniles of a myriad of fish as well as many other important aquatic organisms.



Impact of Dense Monotypic Starry Stonewort Meadows on Inland Lake Littoral Habitat

Dense aquatic meadows of Starry Stonewort eliminate or significantly reduce vertical habitat structural complexity that is created by aquatic plant diversity and that provides optimal growth conditions and refuge for the fry and juveniles of a myriad of fish as well as many other important aquatic organisms.



Impact of Dense Monotypic Starry Stonewort Meadows on Inland Lake Littoral Habitat

Dense meadows of Starry Stonewort are capable of complete collapse in shallow areas when surface water temperatures reach $\geq 86^{\circ}\text{ F}$ (30° C); colonization then occurs in a band of narrow zonation defined by depth, light (water transparency) and water temperature.

Optimal Temperature Range:

42° F (5.5° C) – 68° F (20° C)



References

- Barko, J. W. & Smart, R. M. (1981). Comparative influences of light and temperature on the growth and metabolism of selected submersed freshwater macrophytes. *Ecological Monographs*, 51, 219-235.
- Berquist, S. G., Musselman, H. H. & Millar, C. E. (1932). Marl, Its Formation, Excavation, and Use. Michigan State University Agricultural Experiment Station Special Bulletin, 32 pg.
- Bharathan, S. (1983). Developmental morphology of *Nitellopsis obtusa* (Desv.) Groves. Proceedings of the Indian Academy of Science (Plant Science), Vol. 92, Number 5, 373-379.
- Bharathan, S. (1987). Bulbils of some charophytes. Proceedings of the Indian Academy of Sciences (*Plant Science*), 97 (3), 257-263.
- Blatchley, W. S. & Ashley, G. H. (1900). The Lakes of Northern Indiana and Their Associate Marl Deposits. Annual Report, Indiana Department of Geology and Natural Resources. Indianapolis, Indiana, 301 pg.
- Blindlow, I. (1992). Decline of charophytes during eutrophication: comparison with angiosperms. *Freshwater Biology*, 28, 9-14.
- Bociag, K. & Rekowska, E. (2012). Are stoneworts (Characeae) clonal plants? *Aquatic Botany*, 100, 25-34.
- Brainard, A. S. & Schulz, K. L. (2017). Impacts of the cryptic macro-algal invader, *Nitellopsis obtusa*, on macrophyte communities. *Freshwater Science*, 36 (1), 55-62.
- Carlson, R. E. (1977). A Trophic State Index for Lakes. *Limnology and Oceanography*, Volume 22, 361-369.
- Coops, H., Hanganu, J, Tudor, M. & Oosterberg, W. (1999). Classification of Danube Delta lakes based on aquatic vegetation and turbidity. *Hydrobiologia*, 415, 187-191.
- Coops, H. (2002). Ecology of charophytes: an introduction. *Aquatic Botany*, 72, 205-208.
- Escobar, L. E., Qiao, H., Phelps, N. B. D., Wagner, C. K. & Larkin, D. J. (2016). Realized niche shift associated with the Eurasian charophyte *Nitellopsis obtusa* becoming invasive in North America. *Scientific Reports*, 6, 1-15.
- Forsberg, C. (1964). Phosphorus, a maximum factor in the growth of Characeae. *Nature*, 201, 517-518.
- Fuller, L. M. & Minnerick, R. J. (2008). State and Regional Water-Quality Characteristics and Trophic Conditions of Michigan's Inland Lakes, 2001–2005: *U.S. Geological Survey Scientific Investigations Report 2008-5188*, 58 pg.

References

- Fuller, L. M., & Taricska, C. K. (2012). Water-quality characteristics of Michigan's inland lakes, 2001–10. U.S. Geological Survey, Scientific Investigations Report 2011-5233, 53 p.
- Garcia, A. (1994). Charophyta: their use in paleo-limnology. *Journal of Paleo-limnology*, 10, 43-52.
- Gasith, A. & Hoyer, M. V. (1998). Structuring role of macrophytes in lakes: Changing influence along lake size and depth gradient. In: Jeppesen, E., Søndergaard, M. & Christoffersen, K. (Eds.), The structuring role of submerged macrophytes in lakes. *Ecological Studies*, 131, 381-392.
- Geis, J. W., Schumacher, G. J., Raynell, D. J. & Hyduke, N. P. (1981). Distribution of *Nitellopsis obtusa* (Charophyceae, Characeae) in the St. Lawrence River: a new record for North America. *Phycologia*, 20, 211-214.
- Gherardi, F. (2007). Biological Invasions in Inland Waters: An Overview, Invading Nature - *Springer Series in Invasion Ecology*, 2, 3-25.
- Hilt, S., Henschke, I., Rücker, J. & Nixdorf, B. (2010). Can submerged macrophytes influence turbidity and trophic state in deep lakes? Suggestions from a case study. *Journal of Environmental Quality*, 39, 725-733.
- Hilt, S. (2006). Allelopathic inhibition of epiphytes by submerged macrophytes. *Aquatic Botany*, 85, 252-256.
- Hutchinson, G. E. (1975). A Treatise on Limnology, Volume III. *Limnological Botany*. Wiley, New York, 660 pp.
- Jeppesen E, Jensen J. P., Søndergaard, M., Lauridsen, T., Miller, P. H. & Sandby, K. (1998). Changes in nitrogen retention in shallow eutrophic lakes following a decline in density of cyprinids. *Arch Hydrobiologia*, 142, 129-51.
- Johnson, B. R., Wyttenbach, R. A., Wayne, R. & Hoy, R. R. (2002). Action Potentials in a Giant Algal Cell: A Comparative Approach to Mechanisms and Evolution of Excitability. *The Journal of Undergraduate Neuroscience Education*, Fall, 1 (1), 23-27.
- Karol, K. G. & Sleith, R. S. (2017). Discovery of the Oldest Record of *Nitellopsis obtusa* (Charophyceae, Charophyta) in North America. *Journal of Phycology*, 53 (5), 1106-1108.
- Kovtun-Kante, A. (2015). Charophytes of Estonian inland and coastal waters: distribution and environmental preferences. *University of Tartu Press*, 81 pg.
- Krause, W. (1985). Über die Standortansprüche das Ausbreitungsverhalten der Stern-Armleuchteralge *Nitellopsis obtusa* (Desvaux) J, Groves. *Carolinea*, 42, 31-42.

References

- Kufel, L. & Kufel, I. (2002). Chara Beds Acting as Nutrient Sinks in Shallow Lakes - A Review. *Aquatic Botany*, 72 (3-4), 249-260.
- Kufel, L. & Ozimek, T. (1994). Can Chara control phosphorus cycling in Lake Lukajno (Poland)? *Hydrobiologia*, 275/276, 277-283.
- Lewis, L. A. & McCourt, R. M. (2004). Green Algae and the Origin of Land Plants. *American Journal of Botany*, Vol. 91, No. 10, 1535-1556.
- Pullman, D. & Crawford, G. (2010). A Decade of Starry Stonewort in Michigan. *Lakeline Magazine*, Summer Edition, 36-42.
- McCourt, R. M., Delwiche, C. F. & Karol, K. G. (2004). Charophyte algae and land plant origins. *Trends in Ecology and Evolution*, 19, 661-666.
- Melzer, A. (1999). Aquatic macrophytes as tools for lake management. *Hydrobiologia*, 395/396, 181-190.
- Midwood, J. D., Darwin, A., Ho, Z. Y., Rokitnicki-Wojcik, D. & Grabas, G. (2016). Environmental factors associated with the distribution of non-native starry stonewort (*Nitellopsis obtusa*) in a Lake Ontario coastal wetland. *Journal of Great Lakes Research*, 42 (2), 348-355.
- Mills, E. L., Leach, J. H., Carlton, T. & Secor, C. L. (1993). Exotic Species in the Great Lakes: A History of Biotic Crises and Anthropogenic Introductions. *Journal of Great Lakes Research*, 19 (1), 1-54.
- Molnar, J. L., Gamboa, R. L., Revenga, C. & Spalding, M. D. (2008). Assessing the global threat of invasive species to marine biodiversity. *Frontier in Ecology and the Environment*, 6 (9), 485-492.
- Otsuki, A. & Wetzel, R. G. (1972). Co-precipitation of Phosphate with Carbonates in a Marl Lake. *Oceanography and Limnology*, 17, 763-767.
- Pełechaty, M., Pronin, E. & Pukacz, A. (2014). Charophyte occurrence in *Ceratophyllum demersum* stands. *Hydrobiologia*, 737, 111-120.
- Runkel, E. (2006). Technically Speaking: Daily Light Integral Defined. *GPN*. pg. 70.
- Scheffer, M., Hosper, S. H., Meijer, M. L., Moss, B. & Jeppesen, E. (1993). Alternative equilibria in shallow lakes. *Trends in Ecology and Evolution*, 8, 275-279.
- Scheffer, M. (1998). Ecology of Shallow Lakes. New York: *Chapman and Hall*, 357 pp.

References

- Schloesser, D. W., Hudson, P. L. & Nichols, S. J. (1986). Distribution and Habitat of *Nitellopsis obtusa* (Characeae) in the Laurentian Great Lakes. *Hydrobiologia*, 133, 91-96.
- Schubert, H. & Blindow, I. (Eds.) (2003). Charophytes of the Baltic Sea. *Baltic Marine Biologists Publication*, 19. Koeltz Scientific, Königstein.
- Sculthorpe, C. D. (1967). The Biology of Aquatic Vascular Plants. New York, N. Y., *St. Martin Press*, 610 pg.
- Skurzynski, P. & Bociąg, K. (2011). Vegetative propagation of *Chara rudis* (Characeae, Chlorophyta). *Phycologia*, 50, 194-201.
- Sleith, R. S., Havens, A. J., Stewart, R. A. & Karol, K. G. (2015). Distribution of *Nitellopsis obtusa* (Characeae) in New York, U.S.A. *Brittonia*, 67 (2), 166-172.
- Stewart, N. F. (1996). Stoneworts - connoisseurs of clean water. *British Wildlife*, 8, 92-99.
- Soulié-Mârsche, I. (2008). Charophytes, indicators for low salinity phases in North African sebkhet. *Journal of African Earth Sciences*, 51(2), 69-76.
- Soulie-Marsche, I., Benammi, M. & Gemayel, P. (2002). Biogeography of living and fossil *Nitellopsis* (Charophyta) in relationship to new finds from Morocco. *Journal of Biogeography*, 29. 1703-1711.
- Stewart, N. F. (1996). Stoneworts - connoisseurs of clean water. *British Wildlife*, 8, 92-99.
- Stewart, N. F. (2004). Important Stonewort Areas. An assessment of the best areas for stoneworts in the United Kingdom. *Plant Life International*, Salisbury, UK.
- Van den Berg, M. S. (1999). Charophyte colonization in shallow lakes: processes, ecological effects and implications for lake management. Thesis, *Vrije Universiteit*, Amsterdam.
- Van Donk, E. & Van de Bund, W. (2002). Impact of submerged macrophytes including charophytes on phytoplankton and zooplankton communities: allelopathy versus other mechanisms. *Aquatic Botany*, 72, 261-274.
- Wetzel, R. G. (2001). Limnology: Lake and river ecosystems (3rd Ed.). San Diego, CA: *Academic Press*, 1,006 p.
- Wiik, E. M. E. (2012). Understanding the ecological response of marl lakes to enrichment: a combined limnological and paleo-limnological approach. Environmental Change Research Centre, Department of Geography, *University College London*, 276 p.

The background of the slide features a close-up, low-angle shot of green grass. The grass blades are vibrant green and appear to be blowing in the wind, creating a sense of movement. The top portion of the image fades into a dark, almost black sky, which provides a high-contrast background for the white text.

Thank you for your attention!

Questions?

S
T
A
R
R
Y

S
T
O
N
E
W
O
R
T

A North American Laurentian
Great Lakes Region Water Resource
and Lake Manager's Guide
to
Understanding
Exotic Invasive *Nitellopsis obtusa*

William Scott Brown

Book's available for

purchase at today's

workshop...

\$24.00 each.