

## Michigan Waterfront Alliance Update for Monday, June 29, 2020



**Michigan Waterfront Alliance** (MWA) is a 501(c) 4 non-profit corporation formed over twenty years ago in order to effectively advocate for the creation or preservation of state laws and/or policies designed to protect, preserve, and promote the sustainable and wise use of our state's immense treasure of high quality freshwater resources. Our primary mission will be accomplished by pro-active participation in Michigan's legislative process (lobbying), by participating in court cases whose outcomes may have significant statewide ramifications, and/or by direct involvement with natural resources management, or environment focused state agencies or departments.



### [INVASIVE SPECIES](#)

#### **Aquatic Invasive Species Landing Blitz**

**The 2020 Aquatic Invasive Species Landing Blitz is June 28 through July 5**

Volunteers for this year's Aquatic Invasive Species Landing Blitz will be on hand at nearly 30 locations across the state to remind watercraft owners they should follow best practices and clean their boats, trailers and equipment to help prevent the spread of aquatic invasive species.

The Landing Blitz corresponds with **Aquatic Invasive Species Awareness Week, June 28 through July 5**, and includes all Great Lakes states and Canadian provinces. The [Michigan Department of Environment, Great Lakes, and Energy \(EGLE\)](#) is partnering with the [Department of Natural Resources \(DNR\)](#) and the [Department of Agriculture and Rural Development \(MDARD\)](#) to sponsor the education and outreach events across Michigan.

[Gov. Gretchen Whitmer's proclamation marking Aquatic Invasive Species Awareness Week](#) notes the week is an opportunity for Michigan's government to join forces with business, industry, environmental groups, community organizations, citizens and other Great Lakes states and provinces to take action against the introduction and spread of aquatic invasive species.

To find a Landing Blitz event in your area, contact Kevin Walters, EGLE aquatic biologist, at [WaltersK3@Michigan.gov](mailto:WaltersK3@Michigan.gov) or 616-250-8637, or check out an event map at the [Great Lakes Commission website](#).

The most important message from volunteers this year is for boaters and anglers to "Clean, Drain and Dry" boats, trailers and all equipment and gear after each use on any lake, river or stream to prevent spreading invasive plants and other aquatic invasive species from one water body to another. State law requires:

- Making sure watercraft and trailers are free of all aquatic organisms and plants before transporting or launching.
- Removing drain plugs and draining all water from bilges, ballast tanks and live wells before moving watercraft.
- Avoiding releasing unused bait into the water.
- Releasing fish only into the same water body where they were caught to avoid the spread of invasive species and fish diseases.

Following these simple steps can limit the spread of invasive species from one lake or river to another. A short [EGLE video from a past Landing Blitz](#) shows how easy it is to clean, drain and dry boats and trailers.

"Millions of dollars are spent each year in Michigan to control the impacts of aquatic invasive species such as zebra mussels, sea lamprey and Eurasian watermilfoil," said Kevin Walters, aquatic biologist at EGLE. "It only takes a few minutes to do a walk-around of your watercraft and trailer and drain water to make sure everything is clear of material that doesn't belong."

Violations of the state law requiring boaters to clean boats and trailers and drain water can carry a fine of up to \$100. DNR conservation officers will continue their efforts to educate everyone who uses the state's waterways about their responsibilities through direct contacts and in partnership with interested groups.

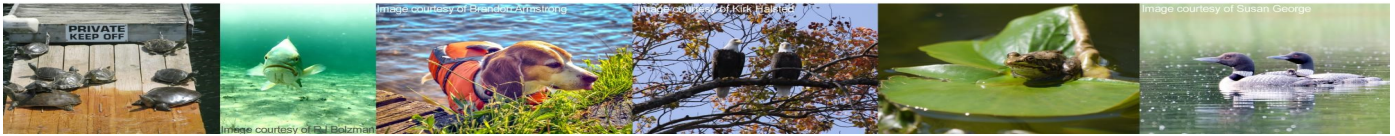
Aquatic invasive species have the potential to harm Michigan's environment, economy and human health. Invasive aquatic plants such as Eurasian watermilfoil and phragmites can crowd out native species and form dense mono-cultures that limit food and habitat, block access for boaters and anglers and foul equipment such as boat motors and fishing gear.

Michigan's Invasive Species Program is cooperatively implemented by EGLE, DNR and MDARD. The program's goals are to prevent new introductions, limit the spread of established species, detect and respond to new invasions, and manage and control established species.

Invasive species sightings can be reported at [Michigan.gov/Invasives](http://Michigan.gov/Invasives) by clicking on the blue "[Species Profiles and Reporting Information](#)" button on the middle of the page.



# 2020 Michigan Inland Lakes Convention Conserving Lakes in a Changing Environment



## Join us!

The Michigan Inland Lakes Convention takes place every two years, and serves lake enthusiasts, researchers, managers, and educators. The Convention is hosted by the [Michigan Inland Lakes Partnership](#), a collaboration of diverse organizations with a common mission to advance stewardship of Michigan's inland lakes. We invite you to join us online, September 16-18, to learn and share the latest innovations and ideas in lake stewardship, and to network with others who share your passion for lakes! This year's theme is "**Conserving Lakes in a Changing Environment**".

## Going Virtual in 2020

The 2020 [Michigan Inland Lakes Convention](#) has been moved to a virtual format. The novel corona virus has greatly impacted the way we work and live, and we are adapting our Convention to match the fluid environment of our lives during this pandemic. Though we realize there is huge value to the in-person networking that takes place between sessions, we must prioritize the safety and health of our participants, partners, sponsors, volunteers, and staff. The new format also has some major benefits, such as the ability to reach a much larger audience, archived presentations that will be available to the public, and significantly decreased cost. Registration fees will be dramatically reduced relative to a face-to-face event: \$30 all-inclusive for 3 days, \$15 for speakers, and FREE for students! These nominal registration fees will support technical and administrative costs and cover student participation.

## Call for Exhibitors

Non-profit organizations, agencies, and academic/Extension programs are invited to share their work, programs, and resources with lake enthusiasts, managers, educators, and researchers during the virtual Convention. While the call for presentation abstracts is closed, you can still request to be featured on the Convention website.

Contact [Julia Kirkwood](#), Convention Co-Chair, to provide a link or PDF file. **Deadline: July 15.**

## Call for Contributors

We invite your business or organization to support the virtual Michigan Inland Lakes Convention. Join the organizations, agencies, and businesses that are helping advance stewardship of our inland lakes through learning, networking, and exchange of ideas. Even in a virtual format, your contribution will help support technical and administrative costs as well as scholarships to support student participation. Review our [Contributor Opportunities](#) for a description of available options. **Deadline: August 15.**

## Convention Contacts

You are welcome to direct any questions you have about the 2020 Convention to its Co-Chairs: [Julia Kirkwood](#) of the Michigan Department of Environment, Great Lakes, and Energy, or [Jo Latimore](#) of Michigan State University. You can also subscribe to the Michigan Inland Lakes Partnership [email list](#), or follow us on [Facebook](#), [Twitter](#), or [Instagram](#) (Convention hashtag: **#MILC2020**).

To learn more about the 2020 Michigan Inland Lakes Convention or to submit an abstract, visit the convention dedicated web page by [clicking here](#).



**Did you know that a very high percentage of every dollar made available to MWA goes directly to pay for our efforts in Lansing to pass legislation that benefits Michigan's water resources and the interests of waterfront property owners?**

**Only You Can Help Amplify the Power of Our Collective Voice in Lansing By Becoming a Member and/or by Making a Generous Donation to Michigan Waterfront Alliance !**

By becoming an Individual, Association, or Corporate member of Michigan Waterfront Alliance, and/or by making a donation to our non-profit organization, you will be contributing to enhancing our ability to help preserve and protect our extraordinary treasure of freshwater resources. The fact is, a very large percentage of the funds generated by membership dues and your generous donations are utilized by our organization to fund our capacity to effectively lobby the state legislature on behalf of protecting Michigan's freshwater resources, and the unique interests of our member waterfront communities. In the coming year, for example, Michigan Waterfront Alliance will be engaged in intensive lobbying efforts focused on encouraging our state legislature to (finally!) create a sustainable revenue source with which to fund the management of an increasingly destructive array of aquatic invasive species that continue to invade and degrade our inland lakes, streams, and wetlands. Our lobbying efforts will also focus on restricting the operation of wake boats to areas of large lakes that will help ensure that shorelines and critical shallow water habitat are not damaged or destroyed. As a founding member and key partner in the Aquatic Invasive Species Task Force, [Michigan Waterfront Alliance](#) will also continue to work on a collaborative basis in 2020 with the [DNR Parks and Recreation Division](#), and the [Department of Environment, Great Lakes, and Energy](#) to develop and implement new programs and initiatives intended to prevent or minimize the spread of aquatic invasive plants and animals.

Please consider becoming a member, and/or of donating to Michigan Waterfront Alliance!

[Click here](#) to visit our Membership page.

[Click here](#) to visit our Donation page.

[michiganwaterfrontalliance.com](http://michiganwaterfrontalliance.com)