

---

**Michigan Waterfront Alliance Update for Monday, January 2, 2023**

1 message

---



Photo by the National Aeronautics and Space Administration

---

Welcome to the Michigan Waterfront Alliance

Update for Monday, January 2<sup>nd</sup>, 2023





**MICHIGAN  
WATERFRONT  
ALLIANCE**

---

**Michigan Waterfront Alliance (MWA) is a 501(c) 4 non-profit corporation formed over twenty years ago in order to effectively advocate for the creation or preservation of state laws, and/or policies designed to protect, preserve, and promote the sustainable and wise use of our state's immense treasure of high quality freshwater resources. Our primary mission will be accomplished by pro-active participation in Michigan's legislative process (lobbying), by participating in court cases whose outcomes may have significant statewide ramifications, and/or by direct involvement with natural resources management, or environment focused state agencies or departments.**

---





The Department of Defense and the Michigan National Guard Propose to More Than Double the Size of the Camp Grayling Joint Maneuver Training Center

# **Intense Opposition Arises Due to the Potential for Harmful Impact on Three Iconic Michigan Rivers**

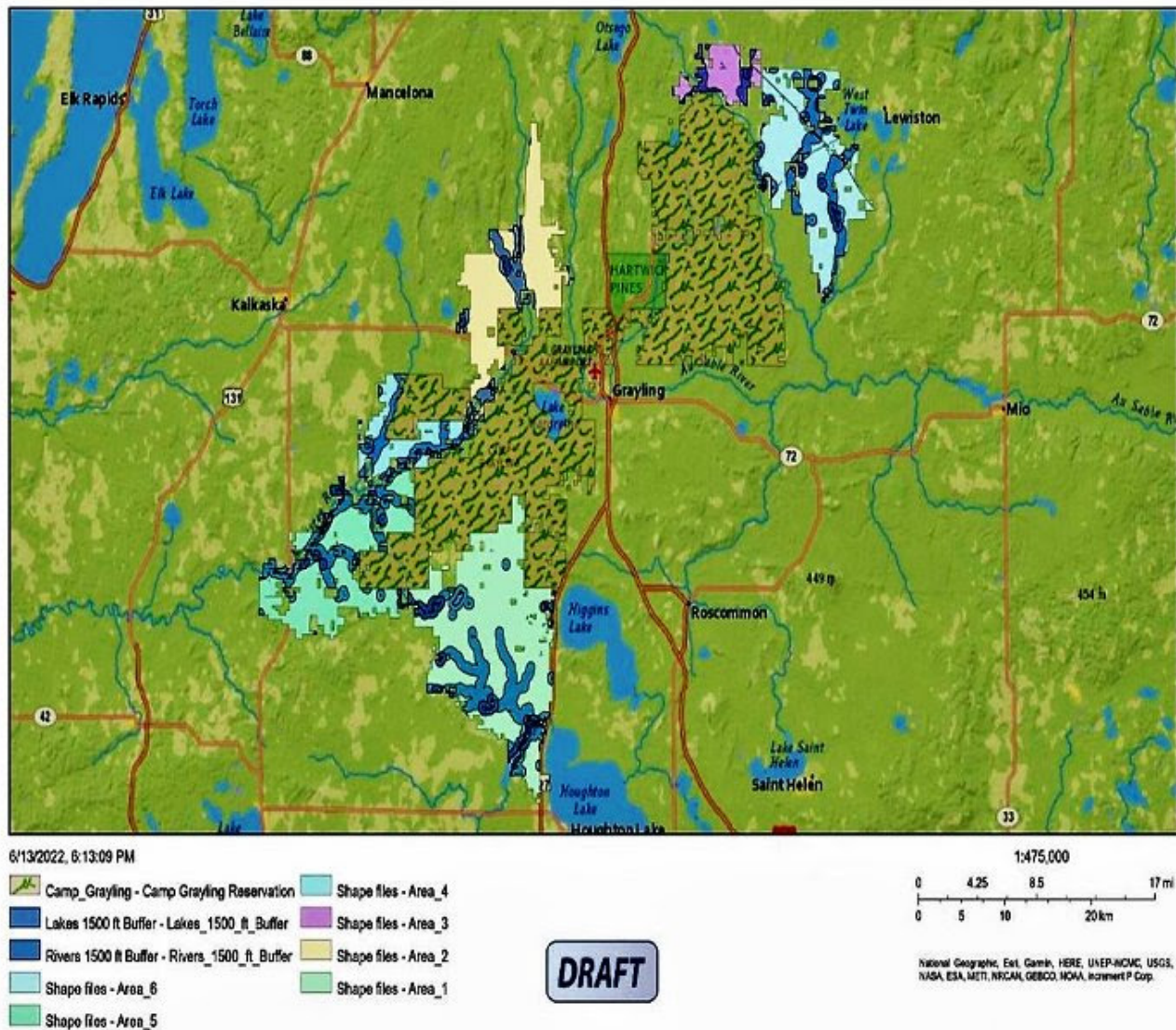
**by Scott Brown  
MWA Board Member & e-Newsletter Editor**

**The Department of Defense (DoD) in collaboration with the Michigan National Guard is proposing to dramatically expand the operational area of the Camp Grayling Joint Maneuver Training Center from 148,000 acres to 310,00 acres by leasing 162,000 acres of publicly owned land from the State of Michigan. The Michigan National Guard website indicates that the primary mission of Camp Grayling is to “provide joint, all-domain training facilities with user-focused support, which enable rotational training units, inter-agency, unified action, and multi-national partners to meet modernization priorities, build and sustain readiness in order to overmatch and dominate our nation’s enemies.”**

**Camp Grayling’s current operational area of 148,000 acres makes the facility the largest combat training area in the United States and provides both active-duty Army and Army National Guard units from around the country with a varied topography, and a four-season climate within which to conduct realistic training operations. However, the DoD and the Michigan National Guard have indicated in documents provided to officials of the Michigan Department of Natural Resources that significant expansion of the operational area of the facility is necessary to support more complex, multi-force combat training scenarios that will be required in the near future to facilitate the deployment of a new national defense strategy referred to as Multi-Domain Operations which seeks to effectively unify the diverse operational components of the five national warfare domains which include land, air, sea, space, and cyberspace. Department of Defense and the Michigan National Guard officials have also suggested that expanding the operational footprint of Camp Grayling will make the facility the premier joint training location for the National Guard, add usable training lands to support new and evolving training requirements that will arise due to steep technological advances in the cyber, electronic, and space warfare domains, and enhance the facilities overall capacity to support the development of new cyber and electronic warfare technology. State National Guard officials also argue that expanding Camp Grayling will inevitably benefit local businesses as the operational tempo and the number of National Guard and active-duty units using the unique military training facility on a year around basis increases over the course of the next several years.**

**DRAFT**

## Camp Grayling Expansion Areas

**DRAFT**

The Michigan Department of Natural Resources decision to approve or disapprove the proposed expansion of Camp Grayling is complicated by matters related to the importance of the project as it pertains to maintaining national security as well as by the level of intense opposition to the project that is primarily fueled by the fact that expansion of the military training facility is entirely dependent upon leasing 162,000 acres of publicly owned land that encompasses significant portions of the ecologically sensitive headwaters of three iconic Michigan rivers – the AuSable, Manistee, and Muskegon.

Viewed as direct threat to the AuSable River's capacity to continue to sustain one of the best brown trout fisheries in North America, for example, the 1,100 member Grayling-based 501(c) 3 non-profit group known as the Anglers of the AuSable is adamantly opposed to expansion of Camp Grayling. Even though Michigan National Guard officials have indicated that a 1,500' protective barrier will be established to help protect rivers and lakes within the proposed expansion area, the Au Sable River



Property Owners Association (ARPOA) also remains strongly opposed to the proposed Camp Grayling expansion based on the belief that Michigan DNR approval of the project would represent a “significant deviation from the mission statement of the MDNR - which is the conservation, protection, management, use and enjoyment of the state’s natural and cultural resources for current and future generations.” It is also important to point out that the Michigan Environmental Council also opposes expansion of Camp Grayling based primarily on the fact that “the military has a known history of contaminating public lands and waters, affecting the health of wildlife and drinking water.”

Michigan Waterfront Alliance also opposes the project until such time that a comprehensive environmental impact study can be conducted, and the results of that objective study indicates that the proposed expansion of Camp Grayling will have little or no harmful impact on plant and animal life or on the quality of the many inland lakes, rivers, streams, and wetlands that currently grace one of Michigan's most pristine areas.



## NotMISpecies Webinar Series

Invasive species pose a threat to Michigan’s environment, economy, and sometimes even human health. What is at stake? What is being done? [This webinar series](#) explores how agencies, universities, and locally led organizations are working together to protect Michigan’s natural resources through the Michigan Invasive Species Program. If you are concerned about the impacts of invasive species or interested in the techniques used to control them, join us as we examine species-specific actions, innovations in research and technology, and programs designed to help communities prevent and manage harmful invasive species. A question-and-answer period will follow each presentation. Recorded versions of all

previous [NotMISpecies webinars](#) are available at [Michigan.gov/EGLE/Outreach](https://Michigan.gov/EGLE/Outreach) under “Featured Webinar Series.”

## Upcoming webinars in the series

**Wednesday, January 18, 9:00 - 10:00 AM**

[If you can't beat 'em, find something that will eat 'em: Biological control for invasive knotweeds](#)

When infestations of invasive species become too large to control chemically and mechanically, biological control can be a cost-effective alternative. Marianna Szucs from the Department of Entomology at Michigan State University will provide a brief background on the practice of classical biological control and share her lab's efforts to establish two host races of the knotweed psyllid (jumping plant lice) that are adapted to different knotweed species.

**Tuesday, February 7, 9:00 - 10:00 AM**

[Lobster mobsters: An update on Michigan's red swamp crayfish response](#)

Though sometimes called “mini-lobsters,” invasive red swamp crayfish are anything but sweet. Once they show up in an ecosystem, they quickly take over, leaving little or nothing for the locals. Dr. Lucas Nathan, aquatic invasive species coordinator for the Michigan DNR, is intent on turning the tide of infestation in southeast Michigan. Join him to hear about recent advances in research and management of this combative crustacean.

**Tuesday, March 21, 9:00 - 10:00 AM**

[Rowing the boat: The Michigan Invasive Species Program 2022 year in review](#)

The hearty crew of staff, partners and volunteers that make up the MISP navigated through some rough waters in 2022 with new detections of beech leaf disease and spotted lanternfly in the state, but they also managed to make a lot of headway. The program's communications coordinator, Joanne Foreman, will highlight response efforts, prevention, outreach and survey work undertaken in 2022 to protect Michigan's natural resources from the effects of invasive species.

**[Michigan.gov/EGLEevents](https://Michigan.gov/EGLEevents)**

REGISTRATION QUESTIONS:

Joel Roseberry: [RoseberryJ@michigan.gov](mailto:RoseberryJ@michigan.gov)

Alana Berthold: [BertholdA@michigan.gov](mailto:BertholdA@michigan.gov)





# MICHIGAN ENVIRONMENTAL COUNCIL

## MISSION

Michigan Environmental Council drives the environmental agenda in Michigan. We develop innovative policy ideas; communicate them to key audiences in a compelling fashion; and engage our members, community leaders and residents as effective local advocates for shared goals. By leading powerful, diverse collaborations, we inspire state leaders to adopt pioneering solutions that set a global standard for environmental leadership.

Michigan Environmental Council—a 501(c)(3) charitable organization—is a coalition of over 80 organizations created in 1980 to lead Michigan's environmental movement in achieving positive change through public policy solutions.

MEC combines deep environmental policy expertise with close connections to key state and federal decision-makers, decades of experience getting things done in the political process, and an ability to rally broad and powerful alliances in support of reforms. With our member groups and partners in the public health and faith-based communities, MEC promotes public policies to ensure that Michigan families will enjoy clear waters, clean beaches, beautiful landscapes and healthy communities for years to come.

To learn more about the mission and goals of the Michigan Environmental Council

**[Click here](#)**



## **Clean Boats, Clean Waters Grants**

Clean Boats, Clean Waters grants supply up to \$3,000 to organizations communicating aquatic invasive species prevention information through outreach materials and in-person educational events to boaters. This funding opportunity is competitive, and applications will be subject to a review process and ranked based on program eligibility, project significance, and overall strategy. Examples of previous grant funded projects can be found at the bottom of this webpage.

Applicants are highly encouraged to partner with other conservation organizations and to conduct boater outreach on a regional scale. Organizations qualified for the [Michigan Invasive Species Grant Program](#) (MISGP) (e.g., CISMAs) should pursue MISGP funds to perform boater outreach activities. CISMAs can provide support to organizations in their area that are applying for this funding.

CBCW is a joint effort between Michigan State University Extension and the Michigan Department of Environment, Great Lakes, and Energy (EGLE). Funding for CBCW and this grant opportunity is provided by a short-term grant through the Great Lakes Restoration Initiative in partnership with EGLE.

### **2023 Grant Opportunity**

The grant application period has been extended! Applications will now be accepted until

**Friday, January 20, 2023.**

Applicants will be informed by March 2023 of funding decisions.

### Examples of eligible projects

- Interpretive signage at a county or township park, nature center or boat launch about proper cleaning techniques to prevent AIS.
- Clean Boats, Clean Waters [boat decontamination station](#) with plant removal tools, sponges, and signage.
- Educational booth during weekends at a popular boat launch or community event.
- Educational presentations to anglers taking part in a fishing tournament.

### Eligible expenditures

- Producing existing state approved AIS outreach materials (e.g., printed materials (brochures, rack cards), banners, flags, floating key chains and towels) and/or designing and producing new materials with approved messaging consistent with outreach campaigns in use in Michigan. Proposed outreach materials will be reviewed within 14 days of submittal to grant administrators. View the Clean Boats, Clean Waters website for examples of approved materials.
- AIS removal supplies such as plant removal tools, sponges, wrenches for removing drain plugs, towels, and plastic scrapers.
- Event supplies including tables, chairs, and tents.
- Clean Boats, Clean Waters volunteer recognition apparel items (i.e., lanyards, shirts, aprons, hats).
- Staff time to perform watercraft inspections, demonstration of boat cleaning techniques and/or outreach to boaters.
- Outreach activities can take place at various locations including but not limited to bait and tackle shops, county fairs, public and private boat launches and waterbodies that do and do not have public access.

*Ineligible expenditures include but are not limited to the partial purchase, upkeep and/or the maintenance of a mechanical boat washing station (i.e., boat cleaning systems using high pressured water, waterless decontamination systems) and indirect costs and fringe for staffing.*

**NOTE:** Permission of boat launch owners and/or managers needs to be obtained prior to any project implementation. For example, the Michigan Department of Natural Resources (DNR) Parks and Recreation Division may require a use permit for any events held at DNR owned/managed boating access sites.

### Eligible organizations

- Local or tribal units of government
- Lake associations/watershed protection groups
- Non-profit 501(c)(3) organizations



## **Funding amount**

- The grant request amount should range from \$1,000 to \$3,000 per grantee.
- There is no match or cost sharing requirement.
- Funds will be distributed via a one-time reimbursement of eligible expenses.
- Any budget or project changes after a grant has been awarded must be approved in writing.

## **Required grant activities**

**Grantees must complete all of the following activities:**

- Grantee agrees to host a minimum of three outreach events with CBCW approved outreach materials.
- Grantee and/or volunteers will review required CBCW training materials (approximately 1 hour of educational instruction).
- Grantee and/or volunteers will collect and report data on the number of people contacted, volunteer hours (if applicable), number of outreach materials distributed, and latitude/longitude of locations (minimum of waterbody name, county, and township) for all events and signage.
- Grantee will submit one narrative report of all grant funded activities and expenditures to MSU Extension. A template will be provided to assist with narrative report creation.
- The narrative report must contain a minimum of five photos of products and/or outreach conducted. Narrative report is due October 31, 2023, or at the time of reimbursement request.
- Grantee will submit all receipts/invoices for reimbursement by October 31, 2023. MSU Extension will not issue payment to the grantee until all receipts have been submitted. One-time payment will be issued within 60 days of receiving receipts and report of grantee activities.

***Note: The grant application will download as a Microsoft Word file. If you have accessibility issues, please contact Kelsey Bockelman at [bockelm4@msu.edu](mailto:bockelm4@msu.edu)***

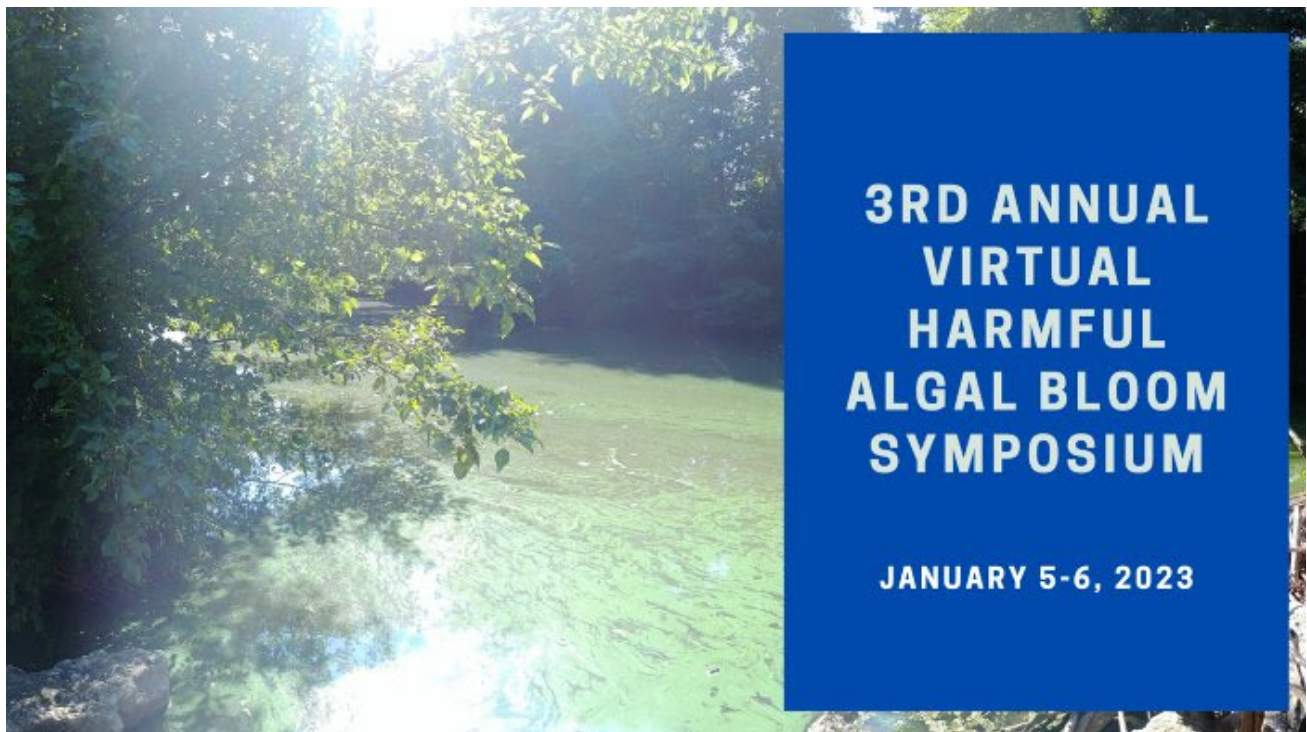
**CBCW Grant Application (Microsoft Word file)**

**To learn more about this outstanding grant opportunity  
[click here](#)**

---



Photo by Scott Brown



**The Algal Bloom Action Team's popular Harmful Algal Bloom Research Symposium will return for it's third year this on Thursday and Friday, January 5 & 6, 2023.**

**The symposium is free and will be held entirely virtually. Tune in to hear the latest harmful algal bloom research, discuss examples of effective bloom management,**



and learn about the latest technologies being used to tackle this global issue.

Register for this event by [clicking here](#)

The Algal Bloom Action Team is a collaboration of water professionals, researchers, and educators from the national network of Water Resources Research Institutes, the North Central Region Water Network, and Cooperative Extensions from the 12 states in the North Central Region of the United States. More information at [northcentralwater.org/habs/](http://northcentralwater.org/habs/).


---

DIVE INTO LAKE LEARNING

INTRODUCTION TO  
LAKES ONLINE

MICHIGAN STATE  
UNIVERSITY

Extension



6 WEEK ONLINE COURSE  
STARTS JAN. 10

[canr.msu.edu/lakesonline](http://canr.msu.edu/lakesonline)

## Learn about Michigan's inland lakes online from MSU Extension

Registration for the award-winning Michigan State University Extension [Introduction to Lakes Online](#) course is now open! This six-week online course kicks-off January 10<sup>th</sup> and is designed for anyone interested in inland lakes, including concerned citizens, decision makers, local leaders, resource professionals, and lakefront property owners. Course topics include lake ecology, watershed management, shoreline protection, aquatic plants, Michigan water law, and community engagement.



These topics are explored via video lectures, interactive activities, and discussion forums. Additional resources are also provided for those looking to dive deeper into a topic. Participants communicate with each other and instructors through lively discussion forums and biweekly Ask-an-Expert webinars.

Registration is open now through **January 8, 2023**. The cost of the course is \$115 per person. Register by December 19, 2022 for an early bird price of \$95 per person.

A certificate of completion is awarded to those who complete the course. Participants can also receive 16 Michigan Department of Agriculture and Rural Development Pesticide Applicator Re-Certification credits and credits in the MSU Extension Master Citizen Planner, Master Gardener, and Master Naturalist programs.

[Click here](#) to learn more about Michigan State University Extension Introduction to Lakes On-line

---



## Virtual Lake Learning Opportunities

January 10 - March 8: Introduction to Lakes Online. (*6-week online course about inland lake ecology, management, and protection.*) Host: Michigan State University Extension. [More details](#). \$

April 24-28, 2023: 13th National Monitoring Conference. (*hybrid conference with limited virtual format*) Host: National Water Quality Monitoring Council. [More details](#). \$

---





Photo by Scott Brown

## Shoreline & Shallows Conference

*Habitat for People, Fish and Wildlife*



**[www.mishorelinepartnership.org](http://www.mishorelinepartnership.org)**

To learn more about the mission, goals, and lakefront homeowner education focused programs of the inland lakes stewardship dedicated non-profit organization known as the Michigan Natural Shoreline Partnership, [click here](http://www.mishorelinepartnership.org)





Photo by Scott Brown

---



**ATTENTION READERS!!!**



In order to add your friends, neighbors, and/or fellow lake or watershed conservation focused association member e-mails to our growing list of water resource conservation minded people who would like to receive this Michigan freshwater resources focused twice monthly newsletter, contact Editor Scott Brown at [scottb1952@gmail.com](mailto:scottb1952@gmail.com)

---



**>> We Need Your Help!!! <<**

## **Why You Should Join Michigan Waterfront Alliance?**

Do you care for your lake, river, or stream? Do you care enough to contact your state senator or representative about issues that affect your waterbody? Do you keep track of the bills that are important to your lake, river, or stream? The good news is that Michigan Waterfront Alliance (MWA) is doing this for you. MWA hires a lobbying firm to keep track of issues and bills which may affect Michigan's waterfronts, and remain in constant contact with senators and representatives. These lobbyists have relationships with those serving in our state legislature, willing to present bills that MWA would support to help protect Michigan's inland waterways, and help to defeat bills that may be detrimental to our waterways. There is an old saying that "you can't

fight city hall.” This may be true if you do not know how, but with the help of MWA’s attorneys, MWA has the experts that know how to deal with legal issues. There have been laws interpreted incorrectly when it comes to our lakes, rivers, and streams. MWA, with its attorneys, has argued these cases when we believe the law has been misinterpreted.

While the MWA Board of Directors is made up of volunteers, it is expensive to hire lobbyists and attorneys. The Michigan Waterfront Alliance membership is made up of individuals, lake associations, and corporations who care about Michigan’s lakes, rivers, and streams. Would you like to be more involved? You can by becoming a member of Michigan Waterfront Alliance and by becoming an active partner in MWA. Membership in MWA is inexpensive:

**We rely entirely on membership dues to fund  
the operating costs of our organization...**

**TO BECOME A MEMBER OF  
MICHIGAN WATERFRONT ALLIANCE VISIT OUR  
>>>>>> MEMBERSHIP PAGE <<<<<<**

**Annual Dues are:**

**\$50 for an individual;**

**\$100 for a lake association; and**

**\$200 for a corporation**

With support from individuals like you, lake associations, and corporations, we can continue to work together as a unified voice choosing to protect Michigan’s water resources for future generations. Thank you for your consideration!!!



## **Join Michigan Waterfront Alliance!**

- **Are you tired of funding the management of aquatic invasive species on your lake that were introduced by recreational boaters using the local MI Department of Natural Resources public boating access site?**
- **Are you just a bit angry that recreational boaters using your lake are not being asked to contribute their fair share to combat the negative influences of aquatic invasive species?**

- Are you worried about the fact that your lakefront residential property values are being negatively influenced by the steadily increasing presence of aquatic invasive species?
- Are you concerned about the fact that it is nearly impossible to find an inland lake in Michigan that does not currently host one or more potentially harmful aquatic invasive species?
- Are you aware of the fact that inland lakes are Michigan's most valuable natural resource, and that our state legislature has thus far appropriated almost nothing in the way of budget resources to help ensure they remain healthy and viable?

**If your answer is yes to any of these important questions, please help ensure that your voice is heard in Lansing by joining Michigan Waterfront Alliance today.**

**[Click here to Join MWA](#)**

---

**[Visit the Michigan Waterfront Alliance Web Site by Clicking Here](#)**

**[Unsubscribe](#)**

**iContact<sup>®</sup>**  
TRY IT FOR FREE ▶